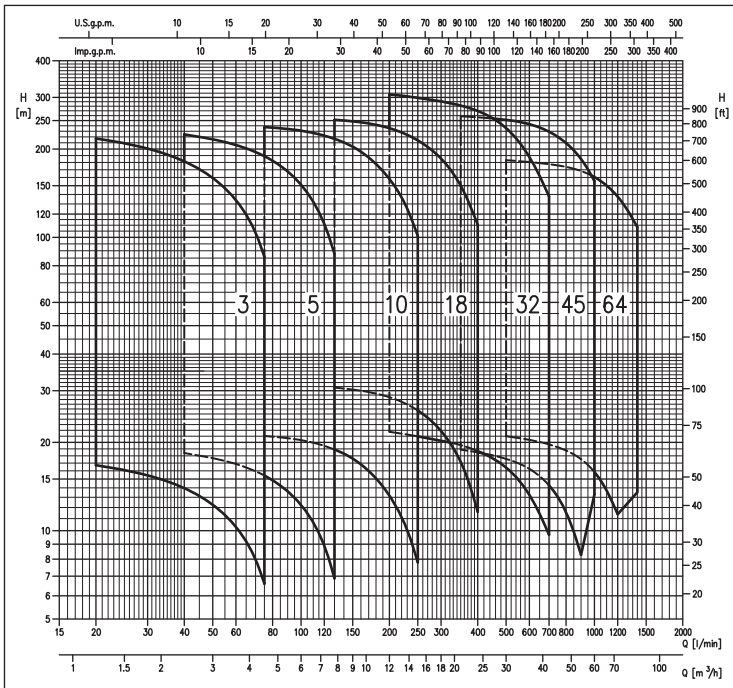


VERTICAL MULTISTAGE ELECTRIC PUMPS

in cast iron, AISI 304, AISI 316



PERFORMANCE RANGE at 2900 min⁻¹ (according to ISO 9906 Attachment A)



Vertical multistage centrifugal electric pumps available in various versions: cast iron (EVMG), AISI 304 stainless steel (EVM), AISI 316 stainless steel (EVMML).

APPLICATIONS

- Suitable for civil, industrial, agricultural and fire-fighting pressure boosting systems
- Primary water treatment plants
- Reverse osmosis, seepage, etc.
- Moving moderately aggressive fluids
- Boiler loading
- Washing
- Heating systems and air-conditioning

TECHNICAL DETAILS

- Reliable, strong, silent and easy to service
- The EVM pumps can be coupled with standard IEC motors
- They offer state-of-the-art technical solutions
- The EVM vertical multistage pumps (hydraulic parts) are in compliance with the 94/9/CE Directive on ATEX products (they belong to Group II, Category 2), zones 1 and 2, temperature class T2 and T4
- Oval counter-flanges, "N" version, already included
- Round counter-flanges, "F" version, as accessories
- WRAS approval for standard version of EVM 3-5-10-18

PUMP TECHNICAL DATA

- Maximum working pressure: 16 bar, 25 bar, 30 bar for EVM32 - EVM45 only
 - Temperature of the liquid: from -15°C to +120°C
 - Maximum solid content: 50 ppm (particle size 0,1-0,25 mm or less)
 - Maximum chlorine ion density: 500 ppm
 - MEI > 0,4
- For further information please see our Data Book on the web site www.ebara-europe.com

MOTOR TECHNICAL DATA

- High efficiency IE2 motors starting from 0,75kW
- Self-ventilated 2 poles asynchronous motor
- Class of insulation F
- IP55 Protection degree
- Single phase voltage 230V ±10% 50Hz, three phase voltage 230/400V ±10%, 50Hz (up to 4 kW included), three phase voltage 400/690V ±10% (5.5 kW and above)
- Circuit breaker protection under user's responsibility

MATERIALS

- Lower pump body, external casing, seal housing disc, impellers, diffusers, shaft casing, joint cover and small elements in contact with the liquid in AISI 304 (EVM), AISI 316 (EVMML) ["EVMG" version: pump casing in cast iron and hydraulic part in AISI 304]
- Tie-rods and small elements not in contact with the liquid in galvanised steel
- Shaft in AISI 316
- Bearings in contact with the liquid in tungsten carbide
- Motor bracket in cast iron (EVMG), in cast iron/AISI 304 (EVM), in cast iron/AISI 316
- Mechanical seal in SiC/Carbon/EPDM (EVM-EVMG 3-5-10-18)
- Mechanical seal in SiC/Carbon/FPM (EVMML 3-5-10-18)
- Mechanical seal with cartridge as per standard in SiC/Carbon/FPM (models 32-45-64) (F= round counterflanges; N= oval counterflanges)
- Liner rings in PTFE

VERSIONI SPECIALI

- Motor in insulation class B available for high temperature
- ATEX version for the electropump
- Available also with IE3 motor

ACCESSORIES (On request)

- Round counter-flanges for "F" version available in:
 - galvanised/EPDM
 - AISI 304/EPDM
 - AISI 316/FPM

VERTICAL MULTISTAGE ELECTRIC PUMPS

in cast iron, AISI 304, AISI 316

PERFORMANCE TABLE EVM 3-5-10-18

Model	P ₂		Motor Mec	Max. working pressure [MPa]	Q=Flow rate												Weight [kg]				
	[HP]	[kW]			l/min	20	40	60	75	100	130	150	200	250	300	350	400	Pump	Pump + motor		
					m ³ /h	1,2	2,4	3,6	4,5	6	7,8	9	12	15	18	21	24	[2]	[1]		
						H=Head [m]															
EVM 3 2N5/0.37 (M)	0,5	0,37	71	1,6	16,7	14,0	10,3	6,6	-	-	-	-	-	-	-	-	-	11,3	17,0	17,1	
EVM 3 3N5/0.37 (M)	0,5	0,37	71	1,6	25,1	20,9	15,5	9,9	-	-	-	-	-	-	-	-	-	11,8	17,5	17,6	
EVM 3 4N5/0.55 (M)	0,75	0,55	71	1,6	33,4	27,9	20,6	13,2	-	-	-	-	-	-	-	-	-	12,3	19,3	18,5	
EVM 3 5N5/0.55 (M)	0,75	0,55	71	1,6	42,0	34,9	25,8	16,5	-	-	-	-	-	-	-	-	-	12,8	19,8	19,0	
EVM 3 6N5/0.75 (M)	1	0,75	80	1,6	50,0	42,0	30,9	19,8	-	-	-	-	-	-	-	-	-	13,7	25,1	22,1	
EVM 3 7N5/0.75 (M)	1	0,75	80	1,6	58,5	49,0	36,1	23,1	-	-	-	-	-	-	-	-	-	13,9	25,3	22,3	
EVM 3 9N5/1.1 (M)	1,5	1,1	80	1,6	75,0	63,0	46,5	29,7	-	-	-	-	-	-	-	-	-	14,8	26,6	25,9	
EVM 3 11N5/1.1 (M)	1,5	1,1	80	1,6	92,0	77,0	56,5	36,3	-	-	-	-	-	-	-	-	-	16,2	28,0	27,3	
EVM 3 13N5/1.5 (M)	2	1,5	90S	1,6	109,0	90,5	67,0	43,0	-	-	-	-	-	-	-	-	-	17,7	35,5	31,7	
EVM 3 15N5/1.5 (M)	2	1,5	90S	1,6	125,0	105,0	77,5	49,5	-	-	-	-	-	-	-	-	-	19,2	37,0	33,2	
EVM 3 18F5/2.2 (M)	3	2,2	90L	2,5	151,0	126,0	92,5	59,5	-	-	-	-	-	-	-	-	-	24,8	44,3	40,8	
EVM 3 22F5/2.2 (M)	3	2,2	90L	2,5	184,0	154,0	113,0	72,5	-	-	-	-	-	-	-	-	-	27,2	46,7	43,2	
EVM 3 26F5/3.0	4	3	100	2,5	217,0	182,0	134,0	86,0	-	-	-	-	-	-	-	-	-	30,8	-	53,6	
EVM 5 2N5/0.37 (M)	0,5	0,37	71	1,6	-	18,4	16,9	15,4	12,2	6,9	-	-	-	-	-	-	-	11,5	17,2	17,3	
EVM 5 3N5/0.55 (M)	0,75	0,55	71	1,6	-	27,6	25,3	23,1	18,4	10,3	-	-	-	-	-	-	-	12,0	19,0	18,2	
EVM 5 4N5/0.75 (M)	1	0,75	80	1,6	-	36,8	33,8	30,8	24,5	13,8	-	-	-	-	-	-	-	12,9	24,3	21,3	
EVM 5 5N5/1.1 (M)	1,5	1,1	80	1,6	-	46,0	42,0	38,6	30,6	17,2	-	-	-	-	-	-	-	13,5	25,3	24,6	
EVM 5 6N5/1.1 (M)	1,5	1,1	80	1,6	-	55,0	50,5	46,5	36,7	20,6	-	-	-	-	-	-	-	14,1	25,9	25,2	
EVM 5 7N5/1.5 (M)	2	1,5	90S	1,6	-	64,5	59,0	54,0	43,0	24,1	-	-	-	-	-	-	-	14,9	32,7	28,9	
EVM 5 8N5/1.5 (M)	2	1,5	90S	1,6	-	73,5	67,5	61,5	49,0	27,5	-	-	-	-	-	-	-	15,5	33,3	29,5	
EVM 5 10N5/2.2 (M)	3	2,2	90L	1,6	-	93,5	86,0	79,0	63,0	36,6	-	-	-	-	-	-	-	17,9	37,4	33,9	
EVM 5 11N5/2.2 (M)	3	2,2	90L	1,6	-	103,0	94,5	86,5	69,5	40,5	-	-	-	-	-	-	-	19,0	38,5	35,0	
EVM 5 12N5/2.2 (M)	3	2,2	90L	1,6	-	112,0	103,0	94,5	75,5	44,0	-	-	-	-	-	-	-	19,7	39,2	35,7	
EVM 5 14N5/3.0	4	3	100	1,6	-	131,0	120,0	110,0	88,0	51,0	-	-	-	-	-	-	-	22,0	-	44,8	
EVM 5 16N5/3.0	4	3	100	1,6	-	150,0	138,0	126,0	101,0	58,5	-	-	-	-	-	-	-	23,3	-	46,1	
EVM 5 18F5/4.0	5,5	4	112	2,5	-	168,0	155,0	142,0	113,0	66,0	-	-	-	-	-	-	-	28,7	-	51,5	
EVM 5 19F5/4.0	5,5	4	112	2,5	-	178,0	163,0	150,0	120,0	69,5	-	-	-	-	-	-	-	29,4	-	52,2	
EVM 5 22F5/4.0	5,5	4	112	2,5	-	206,0	189,0	173,0	139,0	80,5	-	-	-	-	-	-	-	31,2	-	54,0	
EVM 5 24F5/5.0	7,5	5,5	132S	2,5	-	224,0	206,0	189,0	151,0	88,0	-	-	-	-	-	-	-	35,4	-	74,0	
EVM 10 2N5/0.75 (M)	1	0,75	80	1,6	-	-	-	21,0	20,4	18,9	17,6	13,2	7,8	-	-	-	-	18,0	29,4	26,4	
EVM 10 3N5/1.1 (M)	1,5	1,1	80	1,6	-	-	-	31,6	30,5	28,4	26,4	19,8	11,7	-	-	-	-	19,5	31,3	30,6	
EVM 10 4N5/1.5 (M)	2	1,5	90S	1,6	-	-	-	42,0	40,5	37,8	35,2	26,4	15,6	-	-	-	-	21,9	39,7	35,9	
EVM 10 5N5/2.2 (M)	3	2,2	90L	1,6	-	-	-	52,5	51,0	47,5	44,0	33,0	19,5	-	-	-	-	22,5	42,0	38,5	
EVM 10 6N5/2.2 (M)	3	2,2	90L	1,6	-	-	-	63,0	61,0	57,0	53,0	39,5	23,4	-	-	-	-	24,0	43,5	40,0	
EVM 10 8N5/3.0	4	3	100	1,6	-	-	-	84,0	81,5	75,5	70,5	52,5	31,2	-	-	-	-	30,6	-	53,4	
EVM 10 10N5/4.0	5,5	4	112	1,6	-	-	-	105,0	102,0	94,5	88,0	66,0	39,0	-	-	-	-	31,5	-	54,3	
EVM 10 11N5/4.0	5,5	4	112	1,6	-	-	-	116,0	112,0	104,0	97,0	72,5	43,0	-	-	-	-	34,0	-	56,8	
EVM 10 12N5/5.5	7,5	5,5	132S	1,6	-	-	-	130,0	126,0	118,0	111,0	86,5	55,0	-	-	-	-	39,3	-	77,9	
EVM 10 14N5/5.5	7,5	5,5	132S	1,6	-	-	-	151,0	147,0	138,0	130,0	101,0	64,5	-	-	-	-	41,8	-	80,4	
EVM 10 15F5/5.5	7,5	5,5	132S	2,5	-	-	-	162,0	158,0	148,0	139,0	108,0	69,0	-	-	-	-	45,8	-	84,4	
EVM 10 16F5/7.5	10	7,5	132S	2,5	-	-	-	173,0	168,0	158,0	148,0	115,0	73,5	-	-	-	-	47,8	-	88,2	
EVM 10 18F5/7.5	10	7,5	132S	2,5	-	-	-	194,0	189,0	177,0	167,0	129,0	83,0	-	-	-	-	49,8	-	90,2	
EVM 10 20F5/7.5	10	7,5	132S	2,5	-	-	-	216,0	210,0	197,0	185,0	144,0	92,0	-	-	-	-	49,8	-	90,2	
EVM 10 22F5/11	15	11	160M	2,5	-	-	-	238,0	231,0	217,0	204,0	158,0	101,0	-	-	-	-	55,5	-	118,0	
EVM 18 2F5/2.2 (M)	3	2,2	90L	1,6	-	-	-	-	-	31,0	30,3	28,5	25,7	21,9	17,2	11,6	-	27,4	46,9	43,4	
EVM 18 3F5/3.0	4	3	100	1,6	-	-	-	-	-	46,0	45,5	43,0	38,6	32,8	25,7	17,4	-	28,9	28,9	51,7	
EVM 18 4F5/4.0	5,5	4	112	1,6	-	-	-	-	-	61,5	60,5	57,0	51,5	44,0	34,3	23,2	-	31,4	-	54,2	
EVM 18 5F5/5.5	7,5	5,5	132S	1,6	-	-	-	-	-	77,0	75,5	71,5	64,5	54,5	43,0	29,0	-	38,4	-	77,0	
EVM 18 6F5/5.5	7,5	5,5	132S	1,6	-	-	-	-	-	92,0	91,0	85,5	77,0	65,5	51,5	34,8	-	41,4	-	80,0	
EVM 18 7F5/7.5	10	7,5	132S	2,5	-	-	-	-	-	108,0	106,0	100,0	90,0	76,5	60,0	40,5	-	43,9	-	84,3	
EVM 18 8F5/7.5	10	7,5	132S	2,5	-	-	-	-	-	123,0	121,0	114,0	103,0	87,5	68,5	46,5	-	43,8	-	84,2	
EVM 18 10F5/11	15	11	160M	2,5	-	-	-	-	-	157,0	155,0	147,0	134,0	116,0	93,5	69,0	-	54,3	-	116,8	
EVM 18 12F5/11	15	11	160M	2,5	-	-	-	-	-	189,0	186,0	177,0	160,0	139,0	112,0	83,0	-	57,3	-	119,8	
EVM 18 14F5/15	20	15	160M	2,5	-	-	-	-	-	220,0	217,0	206,0	187,0	162,0	131,0	96,5	-	57,8	-	144,9	
EVM 18 15F5/15	20	15	160M	2,5	-	-	-	-	-	236,0	233,0	221,0	201,0	174,0	141,0	104,0	-	58,3	-	145,4	
EVM 18 16F5/15	20	15	160M	2,5	-	-	-	-	-	252,0	249,0	236,0	214,0	186,0	150,0	110,0	-	61,3	-	148,4	

1,6 MPa= 16 bar
2,5 MPa= 25 bar

[1]= Three phase only
[2]= Single phase only

VERTICAL MULTISTAGE ELECTRIC PUMPS

in cast iron, AISI 304, AISI 316

PERFORMANCE TABLE EVM 32-45

Model	P ₂		Motor Mec	Max. working pressure [MPa]	Q=Flow rate						Weight [kg]			
	[HP]	[kW]			l/min	200	350	500	600	700	900	1000	Pump	Pump + motor
					m ³ /h	12	21	30	36	42	54	60		
					H=Head [m]									
EVM 32 1-0F5/2.2	3	2,2	90L	1,6	21,7	19,6	16,4	13,2	9,7	-	-	-	56,0	72,0
EVM 32 2-2F5/3.0	4	3	100	1,6	36,9	31,6	23,5	17,4	-	-	-	-	58,0	80,8
EVM 32 2-0F5/4.0	5,5	4	112	1,6	43,5	39,2	32,8	26,5	19,4	-	-	-	58,0	80,8
EVM 32 3-3F5/5.5	7,5	5,5	132S	1,6	55,5	47,5	35,2	26,1	-	-	-	-	74,0	112,6
EVM 32 3-1F5/5.5	7,5	5,5	132S	1,6	62,0	55,0	44,5	35,2	24,5	-	-	-	74,0	112,6
EVM 32 4-3F5/7.5	10	7,5	132S	1,6	77,0	67,0	51,5	39,4	-	-	-	-	77,0	117,4
EVM 32 4-1F5/7.5	10	7,5	132S	1,6	83,5	74,5	61,0	48,5	34,2	-	-	-	77,0	117,4
EVM 32 5-3F5/11	15	11	160M	1,6	100,0	89,0	70,0	54,0	37,3	-	-	-	96,0	158,5
EVM 32 5-0F5/11	15	11	160M	1,6	110,0	100,0	84,0	67,0	49,0	-	-	-	96,0	158,5
EVM 32 6-3F5/11	15	11	160M	1,6	122,0	109,0	87,0	67,5	47,0	-	-	-	99,0	161,5
EVM 32 6-2F5/11	15	11	160M	1,6	125,0	113,0	91,5	71,5	51,0	-	-	-	99,0	161,5
EVM 32 7-3F5/15	20	15	160M	1,6	144,0	129,0	104,0	81,0	57,0	-	-	-	102,0	189,1
EVM 32 7-0F5/15	20	15	160M	1,6	154,0	141,0	118,0	94,0	69,0	-	-	-	102,0	189,1
EVM 32 8-3F5/15	20	15	160M	2,5	166,0	150,0	121,0	94,0	67,0	-	-	-	105,0	192,1
EVM 32 8-1F5/15	20	15	160M	2,5	172,0	157,0	130,0	103,0	75,0	-	-	-	105,0	192,1
EVM 32 9-3F5/18.5	25	18,5	160L	2,5	188,0	170,0	137,0	108,0	76,5	-	-	-	108,0	205,5
EVM 32 9-0F5/18.5	25	18,5	160L	2,5	197,0	181,0	152,0	121,0	88,5	-	-	-	108,0	205,5
EVM 32 10-3F5/18.5	25	18,5	160L	2,5	210,0	190,0	154,0	121,0	86,5	-	-	-	112,0	209,5
EVM 32 10-2F5/18.5	25	18,5	160L	2,5	213,0	193,0	159,0	125,0	90,5	-	-	-	112,0	209,5
EVM 32 11-3F5/22	30	22	180	2,5	232,0	210,0	171,0	134,0	96,5	-	-	-	116,0	279,0
EVM 32 11-0F5/22	30	22	180	2,5	241,0	221,0	185,0	147,0	108,0	-	-	-	116,0	279,0
EVM 32 12-3F5/22	30	22	180	2,5	254,0	230,0	188,0	148,0	106,0	-	-	-	119,0	282,0
EVM 32 13-3F5/30	40	30	200	3,0	276,0	250,0	205,0	161,0	116,0	-	-	-	129,0	357,0
EVM 32 13-0F5/30	40	30	200	3,0	285,0	261,0	219,0	174,0	128,0	-	-	-	129,0	357,0
EVM 32 14-3F5/30	40	30	200	3,0	298,0	270,0	222,0	175,0	126,0	-	-	-	133,0	361,0
EVM 32 14-0F5/30	40	30	200	3,0	307,0	281,0	236,0	188,0	138,0	-	-	-	133,0	361,0
EVM 45 1-1F5/3.0	4	3	100	1,6	-	18,9	17,6	16,3	14,3	8,3	-	-	71,0	93,8
EVM 45 1-0F5/4.0	5,5	4	112	1,6	-	25,6	24,6	23,5	21,8	16,7	13,3	-	73,0	95,8
EVM 45 2-2F5/5.5	7,5	5,5	132S	1,6	-	38,1	35,8	33,4	29,8	18,6	-	-	81,0	119,6
EVM 45 2-0F5/7.5	10	7,5	132S	1,6	-	51,5	50,0	48,0	45,0	35,4	29,1	-	81,0	121,4
EVM 45 3-2F5/11	15	11	160M	1,6	-	64,0	61,0	58,0	53,0	37,3	-	-	99,0	161,5
EVM 45 3-0F5/11	15	11	160M	1,6	-	77,5	75,0	72,5	68,0	54,0	45,0	-	99,0	161,5
EVM 45 4-2F5/15	20	15	160M	1,6	-	90,0	86,0	82,0	76,0	56,0	43,0	-	108,0	195,1
EVM 45 4-0F5/15	20	15	160M	1,6	-	103,0	100,0	96,5	91,0	73,0	60,5	-	108,0	195,1
EVM 45 5-2F5/18.5	25	18,5	160L	1,6	-	116,0	111,0	107,0	99,0	74,5	58,5	-	128,0	225,5
EVM 45 5-0F5/18.5	25	18,5	160L	1,6	-	129,0	125,0	121,0	114,0	91,5	76,5	-	128,0	225,5
EVM 45 6-2F5/22	30	22	180	1,6	-	142,0	137,0	131,0	122,0	93,5	74,5	-	133,0	296,0
EVM 45 6-0F5/22	30	22	180	1,6	-	155,0	151,0	146,0	137,0	110,0	92,5	-	133,0	296,0
EVM 45 7-2F5/30	40	30	200	2,5	-	168,0	162,0	155,0	145,0	112,0	90,5	-	139,0	367,0
EVM 45 7-0F5/30	40	30	200	2,5	-	181,0	176,0	170,0	160,0	129,0	108,0	-	139,0	367,0
EVM 45 8-2F5/30	40	30	200	2,5	-	194,0	187,0	180,0	168,0	131,0	106,0	-	146,0	374,0
EVM 45 8-0F5/30	40	30	200	2,5	-	207,0	201,0	194,0	183,0	148,0	124,0	-	146,0	374,0
EVM 45 9-2F5/30	40	30	200	2,5	-	219,0	212,0	204,0	191,0	150,0	122,0	-	151,0	379,0
EVM 45 9-0F5/37	50	37	200	2,5	-	233,0	226,0	219,0	206,0	166,0	140,0	-	151,0	393,0
EVM 45 10-2F5/37	50	37	200	3,0	-	245,0	237,0	229,0	214,0	168,0	138,0	-	156,0	398,0
EVM 45 10-0F5/37	50	37	200	3,0	-	259,0	251,0	243,0	229,0	185,0	156,0	-	156,0	398,0

1,6 MPa= 16 bar
2,5 MPa= 25 bar
3,0 MPa= 30 bar

The contents of this publication must not be regarded as binding. EBARA Pumps Europe S.p.A. reserves the right to effect any modification it deems necessary, without prior notice.

VERTICAL MULTISTAGE ELECTRIC PUMPS

in cast iron, AISI 304, AISI 316

PERFORMANCE TABLE EVM 64

Model	P ₂		Motor Mec	Max. working pressure [MPa]	Q=Flow rate								Weight [kg]	
	[HP]	[kW]			l/min	500	600	700	900	1000	1200	1400	Pump	Pump + motor
					m ³ /h	30	36	42	54	60	72	84		
					H=Head [m]									
EVM 64 1-1F5/4.0	5,5	4	100	1,6	21,0	20,4	19,7	17,5	15,9	11,4	-	70,4	93,2	
EVM 64 1-0F5/5.5	7,5	5,5	132S	1,6	26,6	26,1	25,4	23,7	22,3	18,5	13,5	77,0	115,6	
EVM 64 2-2F5/7.5	10	7,5	132S	1,6	42,5	41,5	40,5	36,5	33,5	25,3	-	81,4	121,8	
EVM 64 2-1F5/11	15	11	160M	1,6	48,0	47	46	42,5	40	32,4	23	93,5	156,0	
EVM 64 2-0F5/11	15	11	160M	1,6	53,5	53	52	49	46,5	39,5	30,6	93,5	156,0	
EVM 64 3-3F5/15	20	15	160M	1,6	64,0	62,5	61	55,5	51	39,3	-	99,0	186,1	
EVM 64 3-2F5/15	20	15	160M	1,6	69,5	68	66,5	61,5	57,5	46,5	32,5	99,0	186,1	
EVM 64 3-1F5/15	20	15	160M	1,6	75,0	74	72,5	68	64	53,5	40	99,0	186,1	
EVM 64 3-0F5/18.5	25	18,5	160L	1,6	80,5	79,5	78	74	70,5	60,5	47,5	99,0	196,5	
EVM 64 4-3F5/18.5	25	18,5	160L	1,6	91,0	89	87	80,5	75,5	60,5	42	108,0	205,5	
EVM 64 4-2F5/18.5	25	18,5	160L	1,6	96,5	95	93	87	81,5	67,5	49,5	108,0	205,5	
EVM 64 4-1F5/22	30	22	180	1,6	102,0	101	98,5	93	88	74,5	57	116,0	279,0	
EVM 64 4-0F5/22	30	22	180	1,6	108,0	106	104	99,0	94,5	81,5	64,5	116,0	279,0	
EVM 64 5-3F5/30	40	30	200	1,6	118,0	116	114	106	99,5	81,5	59,0	128,0	356,0	
EVM 64 5-2F5/30	40	30	200	1,6	124,0	122	119	112	106	88,5	66,5	128,0	356,0	
EVM 64 5-1F5/30	40	30	200	1,6	129,0	127	125	118	112	95,5	74,0	128,0	356,0	
EVM 64 5-0F5/30	40	30	200	1,6	135,0	133	131	124	119	103	81,5	128,0	356,0	
EVM 64 6-3F5/30	40	30	200	1,6	145,0	143	140	131	124	103	76,0	136,0	364,0	
EVM 64 6-2F5/30	40	30	200	2,5	151,0	148	146	137	130	110	83,5	136,0	364,0	
EVM 64 6-1F5/37	50	37	200	2,5	156,0	154	151	143	136	117	91,0	136,0	378,0	
EVM 64 6-0F5/37	50	37	200	2,5	162,0	160	157	149	143	124	99,0	136,0	378,0	
EVM 64 7-3F5/37	50	37	200	2,5	172,0	169	166	156	148	124	93,0	139,0	381,0	
EVM 64 7-2F5/37	50	37	200	2,5	178,0	175	172	162	154	131	101	139,0	381,0	
EVM 64 7-1F5/37	50	37	200	2,5	183,0	181	178	168	161	138	108	139,0	381,0	

1,6 MPa= 16 bar
2,5 MPa= 25 bar

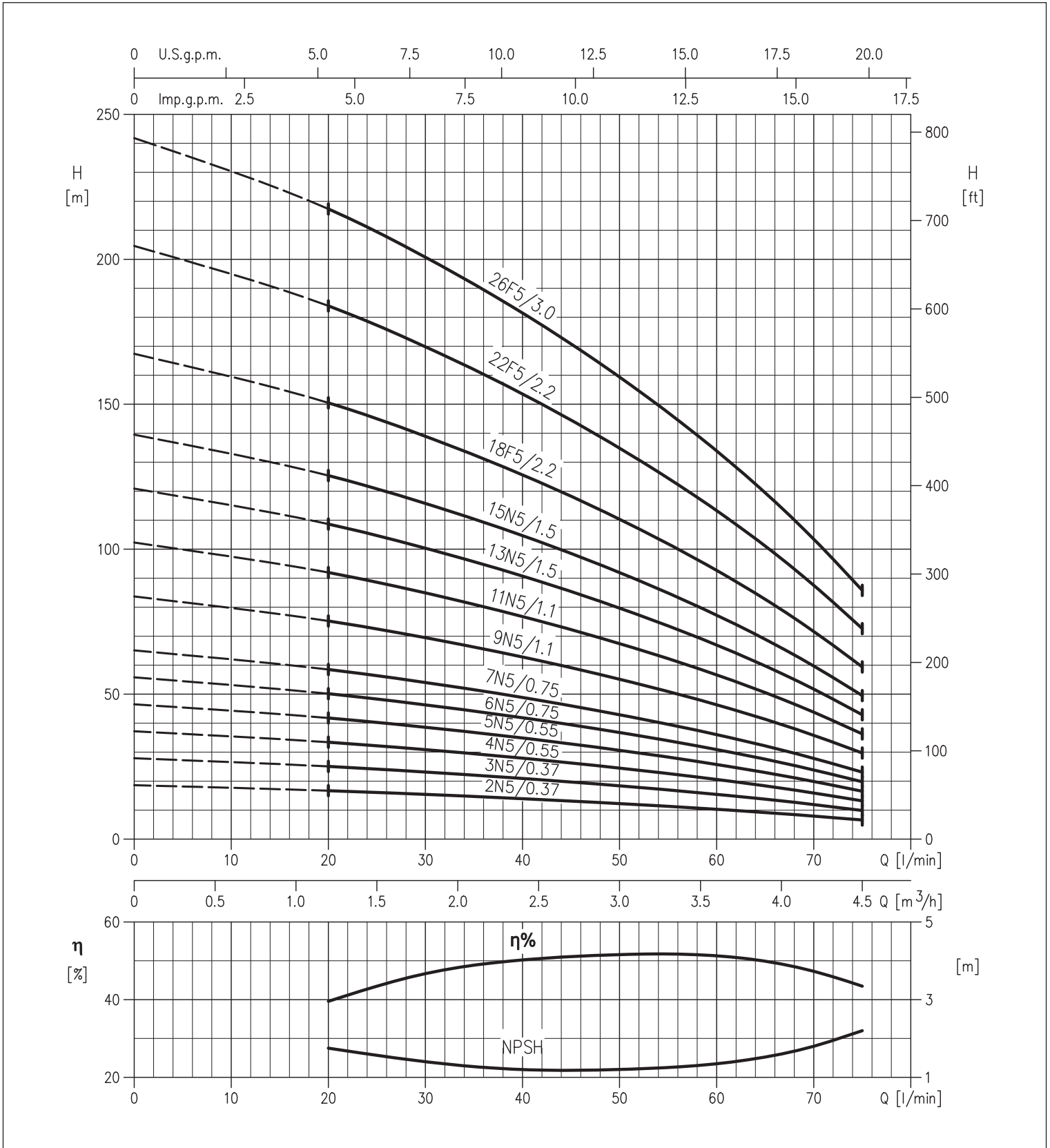


EVM

VERTICAL MULTISTAGE ELECTRIC PUMPS

in cast iron, AISI 304, AISI 316

PERFORMANCE CURVES EVM 3 SERIES (according to ISO 9906 Attachment A)



The contents of this publication must not be regarded as binding. EBARA Pumps Europe S.p.A. reserves the right to effect any modification it deems necessary without prior notice.

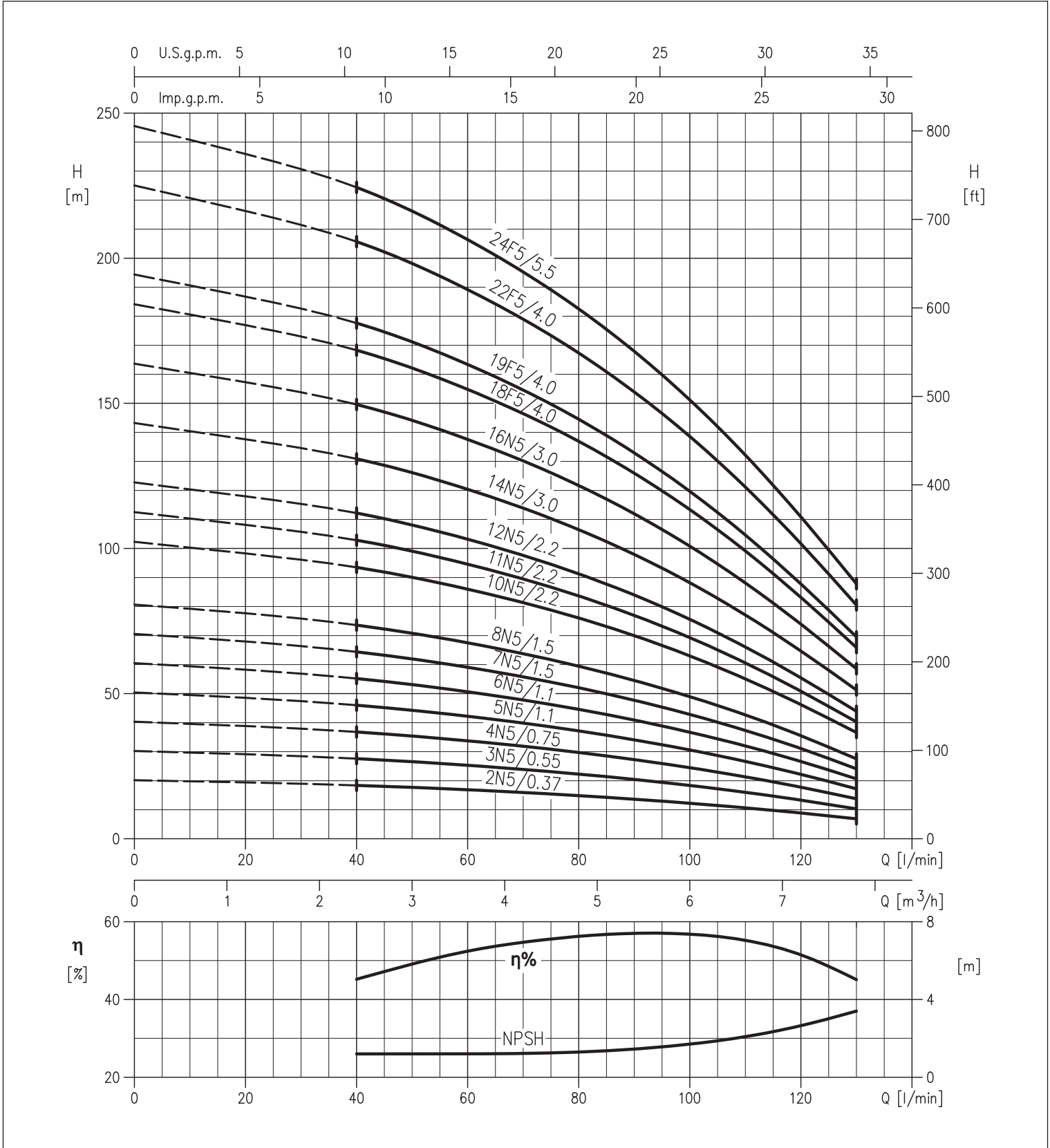


EVM

VERTICAL MULTISTAGE ELECTRIC PUMPS

in cast iron, AISI 304, AISI 316

PERFORMANCE CURVES EVM 5 SERIES (according to ISO 9906 Attachment A)



The contents of this publication must not be regarded as binding. EBARA Pumps Europe S.p.A. reserves the right to effect any modification it deems necessary, without prior notice.

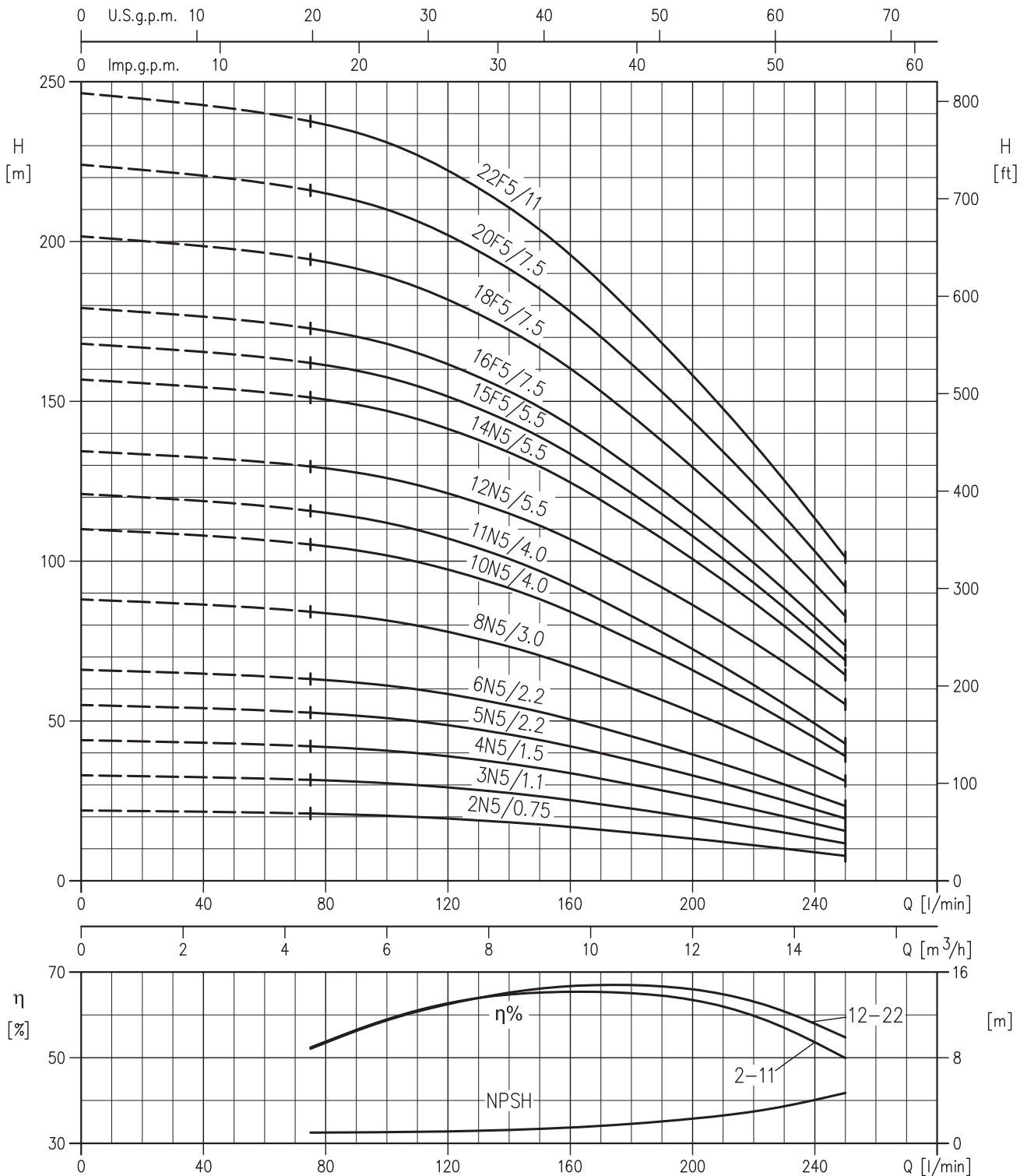


EVM

VERTICAL MULTISTAGE ELECTRIC PUMPS

in cast iron, AISI 304, AISI 316

PERFORMANCE CURVES EVM 10 SERIES (according to ISO 9906 Attachment A)



The contents of this publication must not be regarded as binding. EBARA Pumps Europe S.p.A. reserves the right to effect any modification it deems necessary without prior notice.

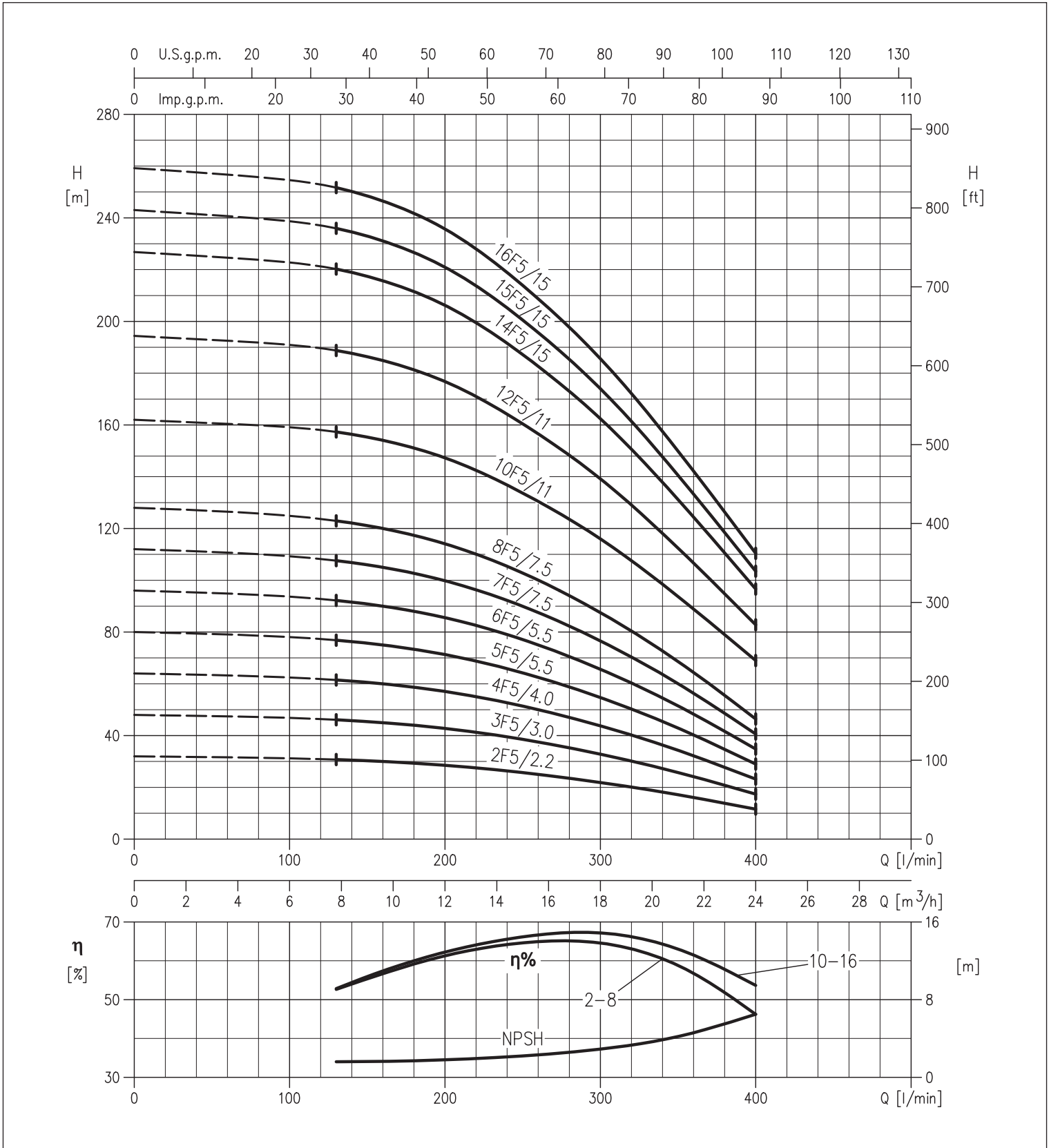


EVM

VERTICAL MULTISTAGE ELECTRIC PUMPS

in cast iron, AISI 304, AISI 316

PERFORMANCE CURVES EVM 18 SERIES (according to ISO 9906 Attachment A)



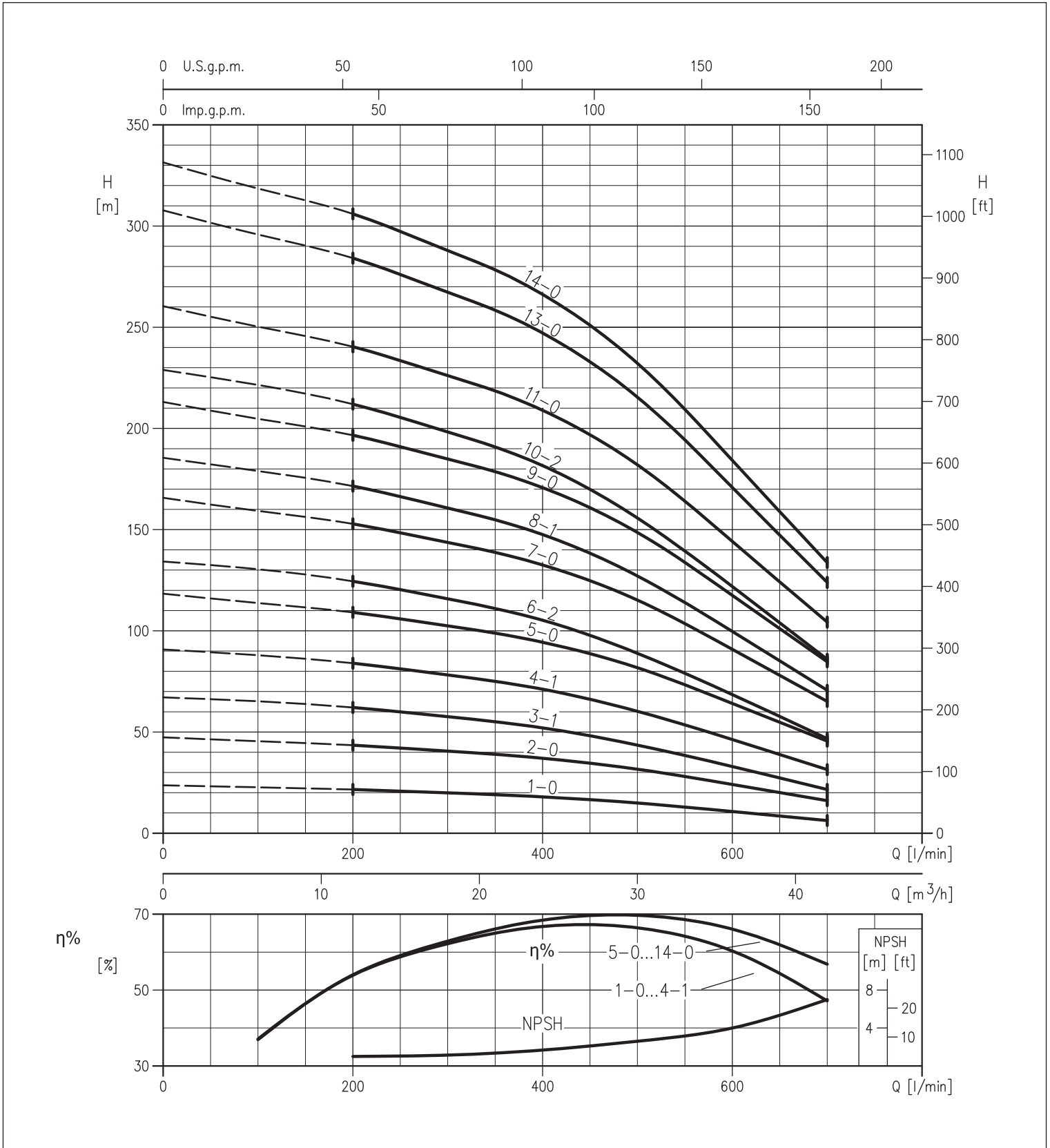


EVM

VERTICAL MULTISTAGE ELECTRIC PUMPS

in cast iron, AISI 304, AISI 316

PERFORMANCE CURVES EVM 32 SERIES (according to ISO 9906 Attachment A)



The contents of this publication must not be regarded as binding. EBARA Pumps Europe S.p.A. reserves the right to effect any modification it deems necessary, without prior notice.

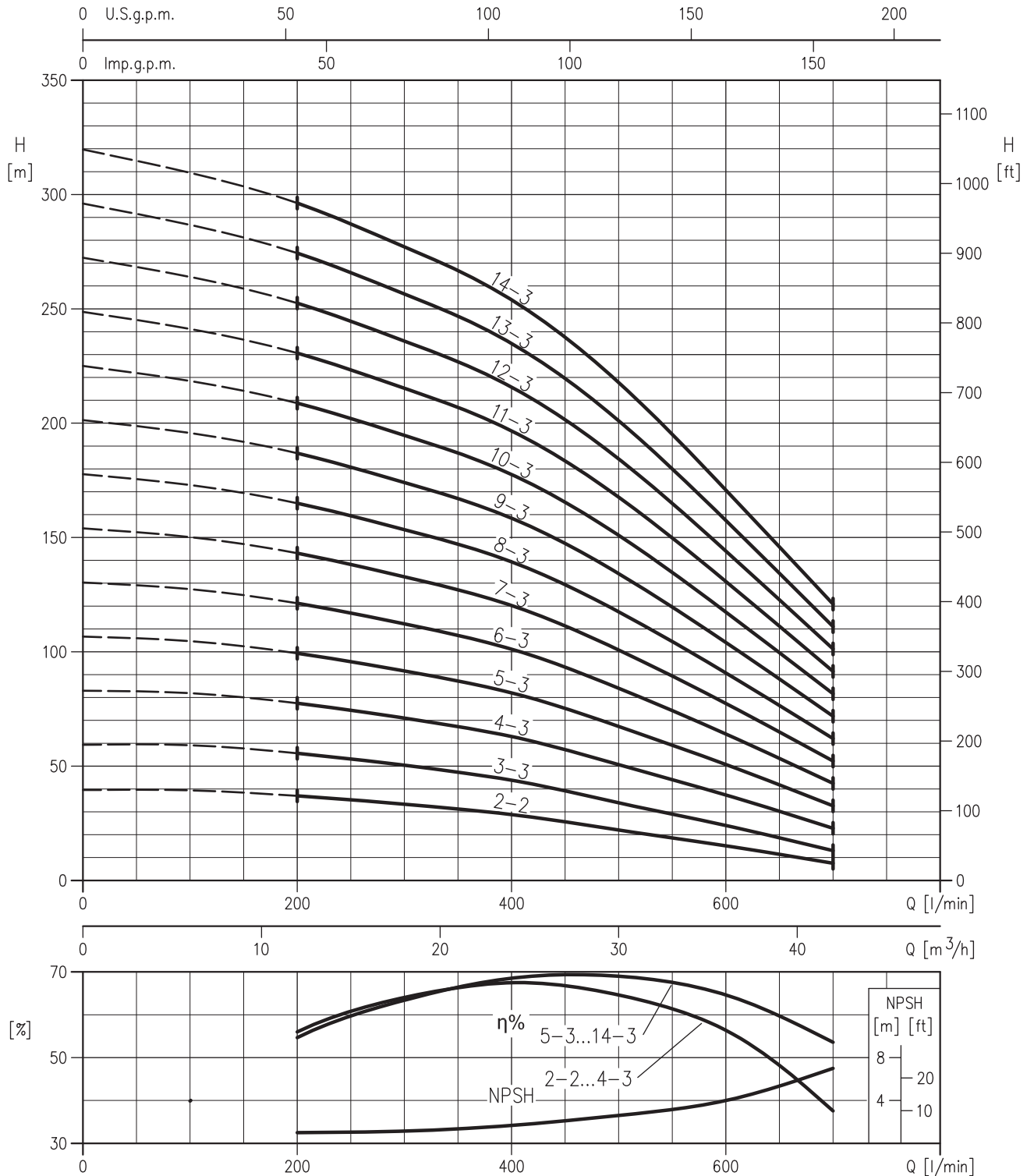


EVM

VERTICAL MULTISTAGE ELECTRIC PUMPS

in cast iron, AISI 304, AISI 316

PERFORMANCE CURVES EVM 32 SERIES (according to ISO 9906 Attachment A)



The contents of this publication must not be regarded as binding. EBARA Pumps Europe S.p.A. reserves the right to effect any modification it deems necessary, without prior notice.

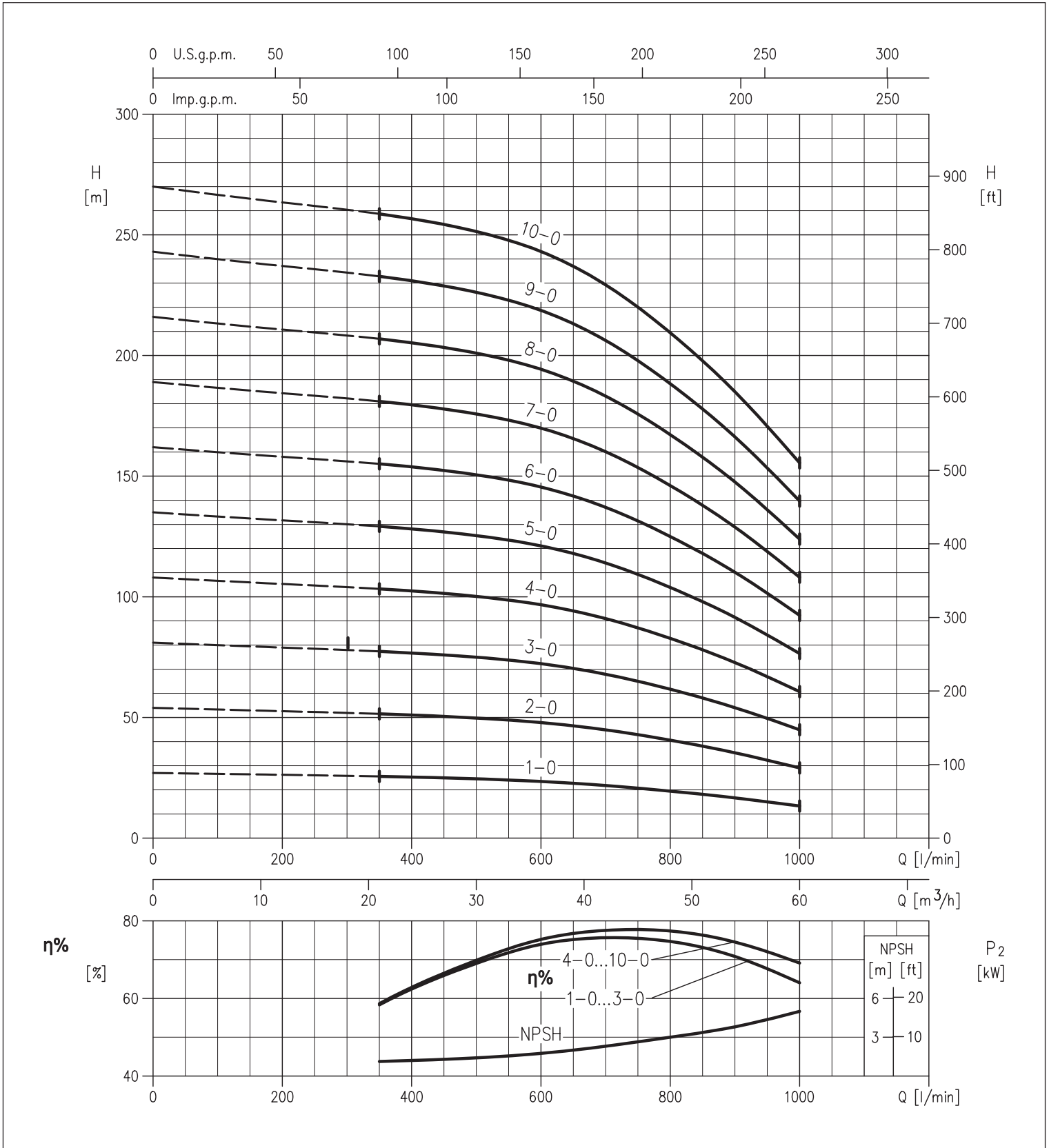


EVM

VERTICAL MULTISTAGE ELECTRIC PUMPS

in cast iron, AISI 304, AISI 316

PERFORMANCE CURVES EVM 45 SERIES (according to ISO 9906 Attachment A)



The contents of this publication must not be regarded as binding. EBARA Pumps Europe S.p.A. reserves the right to effect any modification it deems necessary without prior notice.

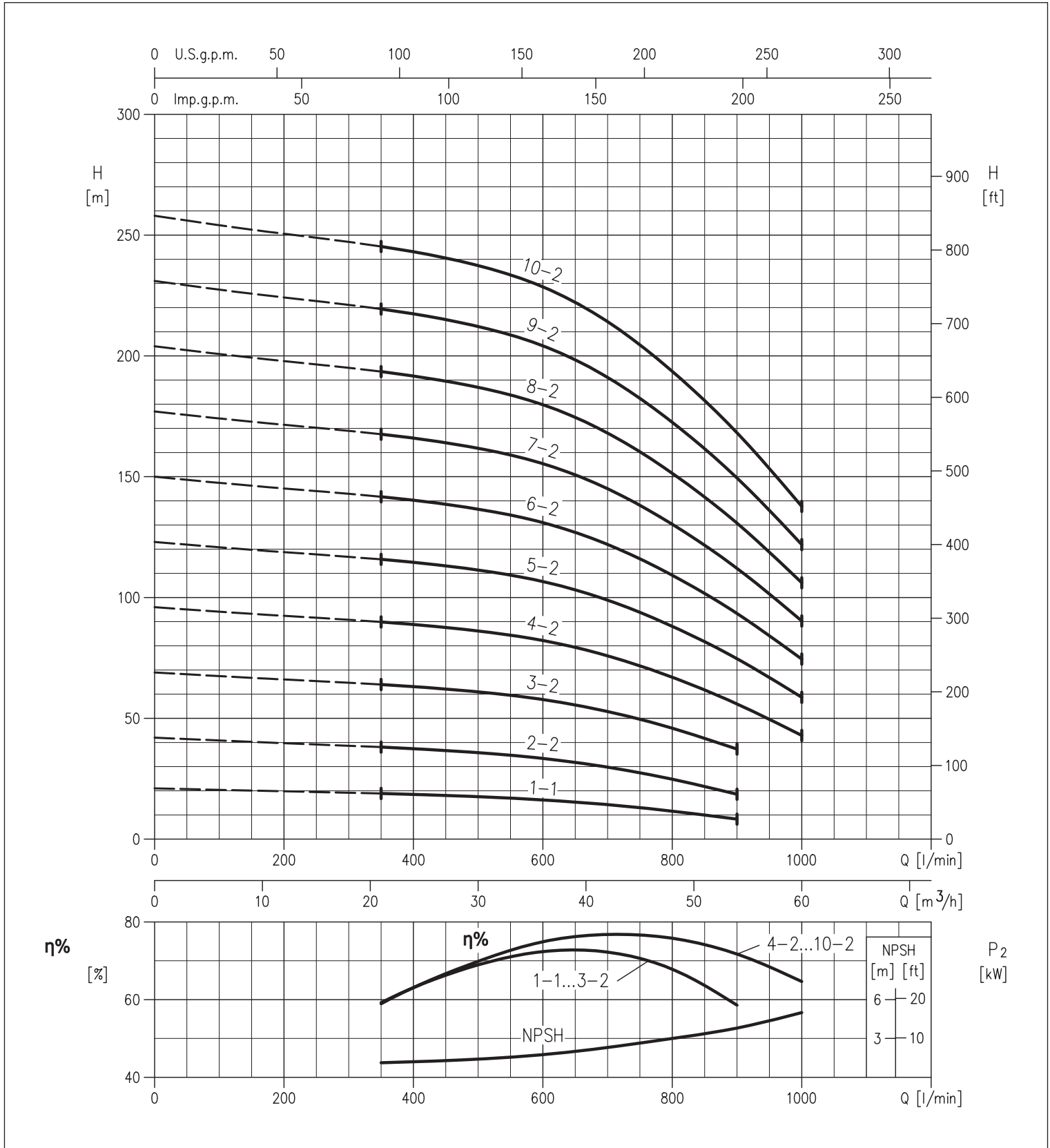


EVM

VERTICAL MULTISTAGE ELECTRIC PUMPS

in cast iron, AISI 304, AISI 316

PERFORMANCE CURVES EVM 45 SERIES (according to ISO 9906 Attachment A)



The contents of this publication must not be regarded as binding. EBARA Pumps Europe S.p.A. reserves the right to effect any modification it deems necessary, without prior notice.

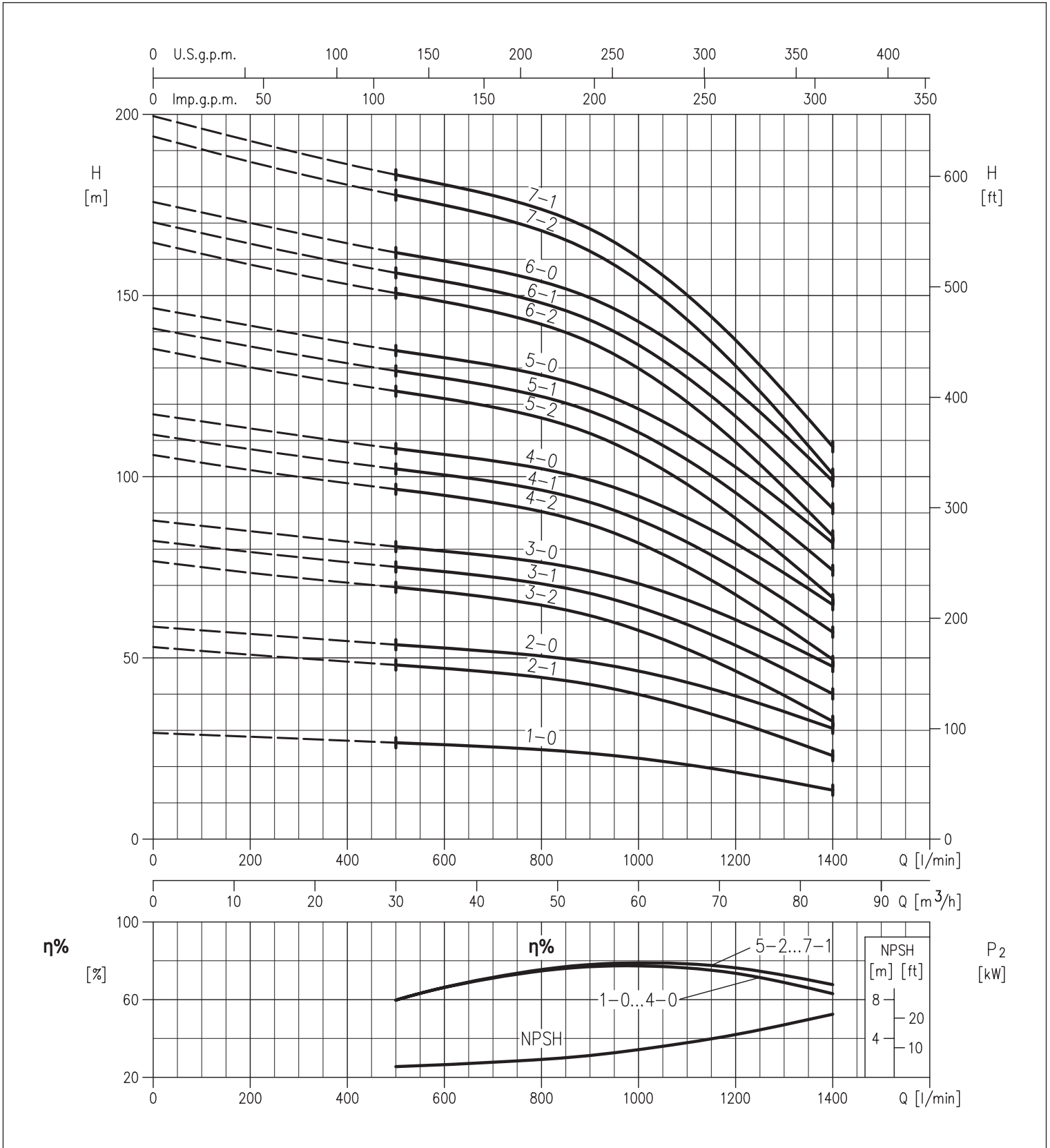


EVM

VERTICAL MULTISTAGE ELECTRIC PUMPS

in cast iron, AISI 304, AISI 316

PERFORMANCE CURVES EVM 64 SERIES (according to ISO 9906 Attachment A)



The contents of this publication must not be regarded as binding. EBARA Pumps Europe S.p.A. reserves the right to effect any modification it deems necessary without prior notice.

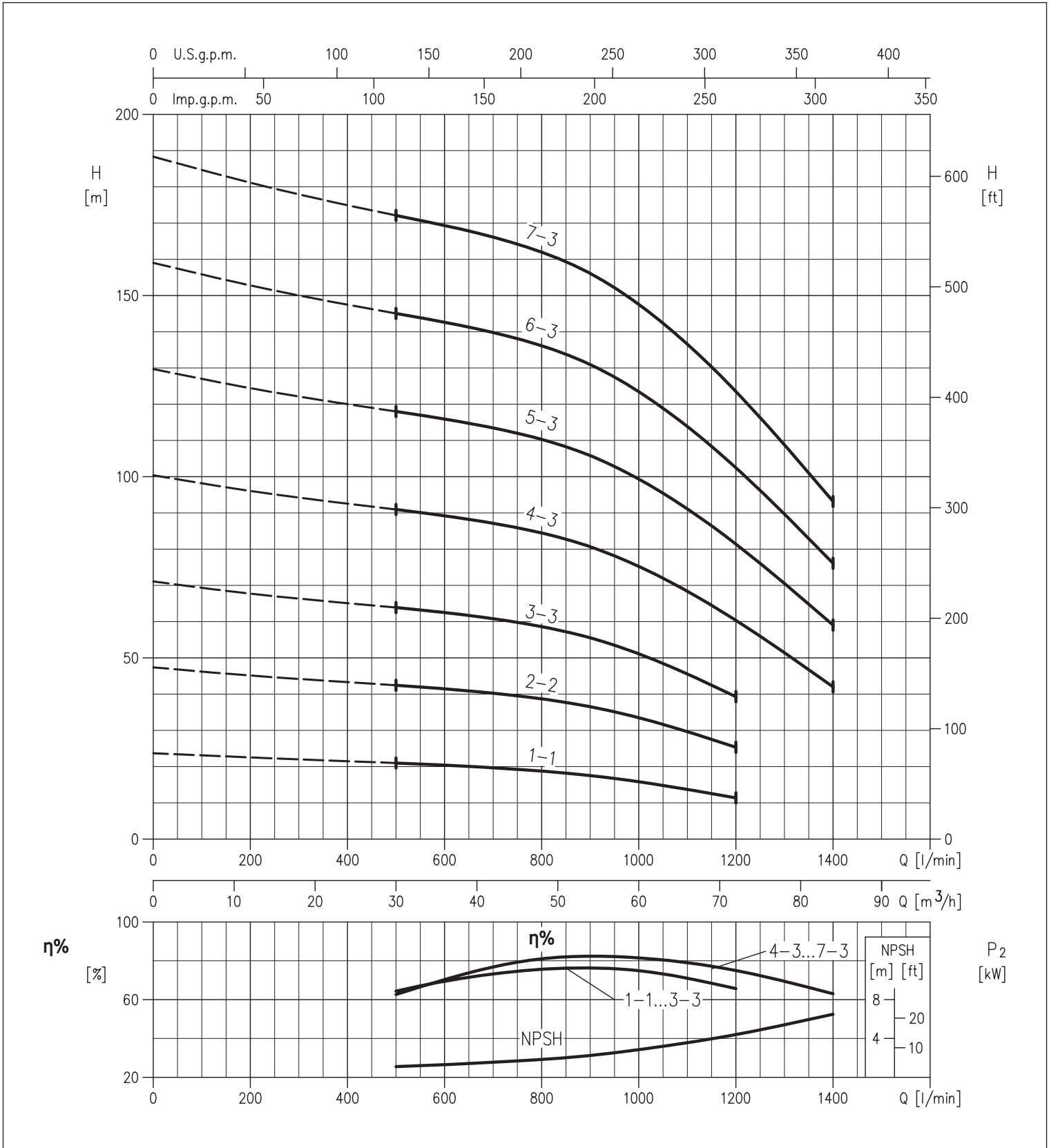


EVM

VERTICAL MULTISTAGE ELECTRIC PUMPS

in cast iron, AISI 304, AISI 316

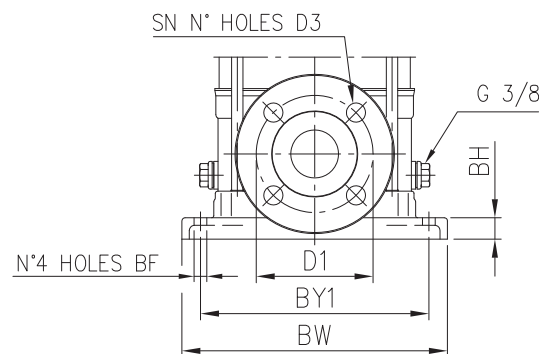
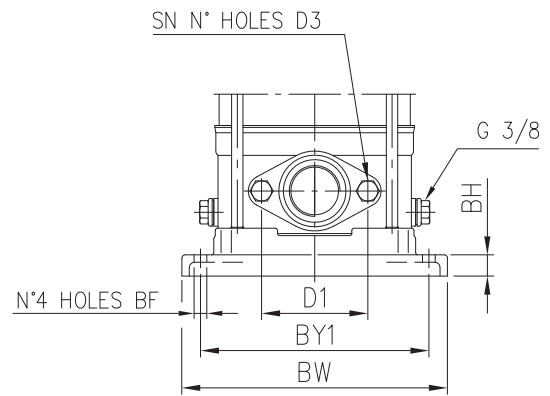
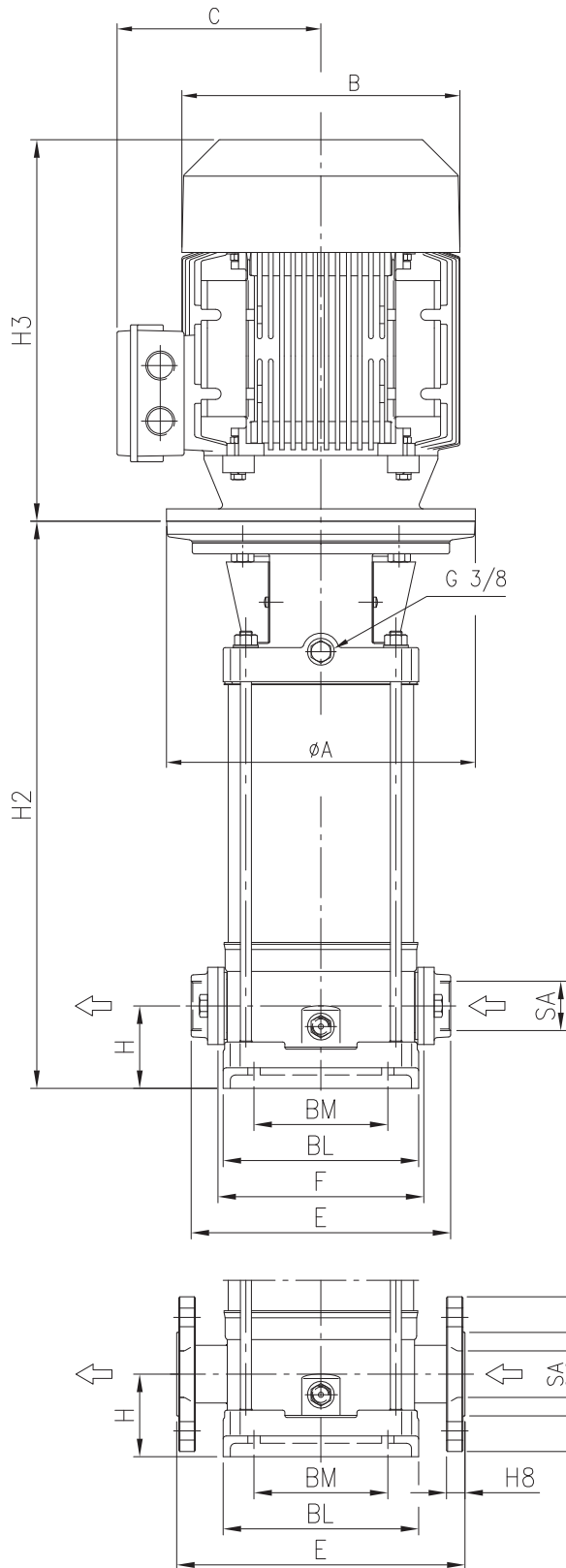
PERFORMANCE CURVES EVM 64 SERIES (according to ISO 9906 Attachment A)



VERTICAL MULTISTAGE ELECTRIC PUMPS

in cast iron, AISI 304, AISI 316

DIMENSIONS EVM 3-5-10-18



VERTICAL MULTISTAGE ELECTRIC PUMPS

in cast iron, AISI 304, AISI 316

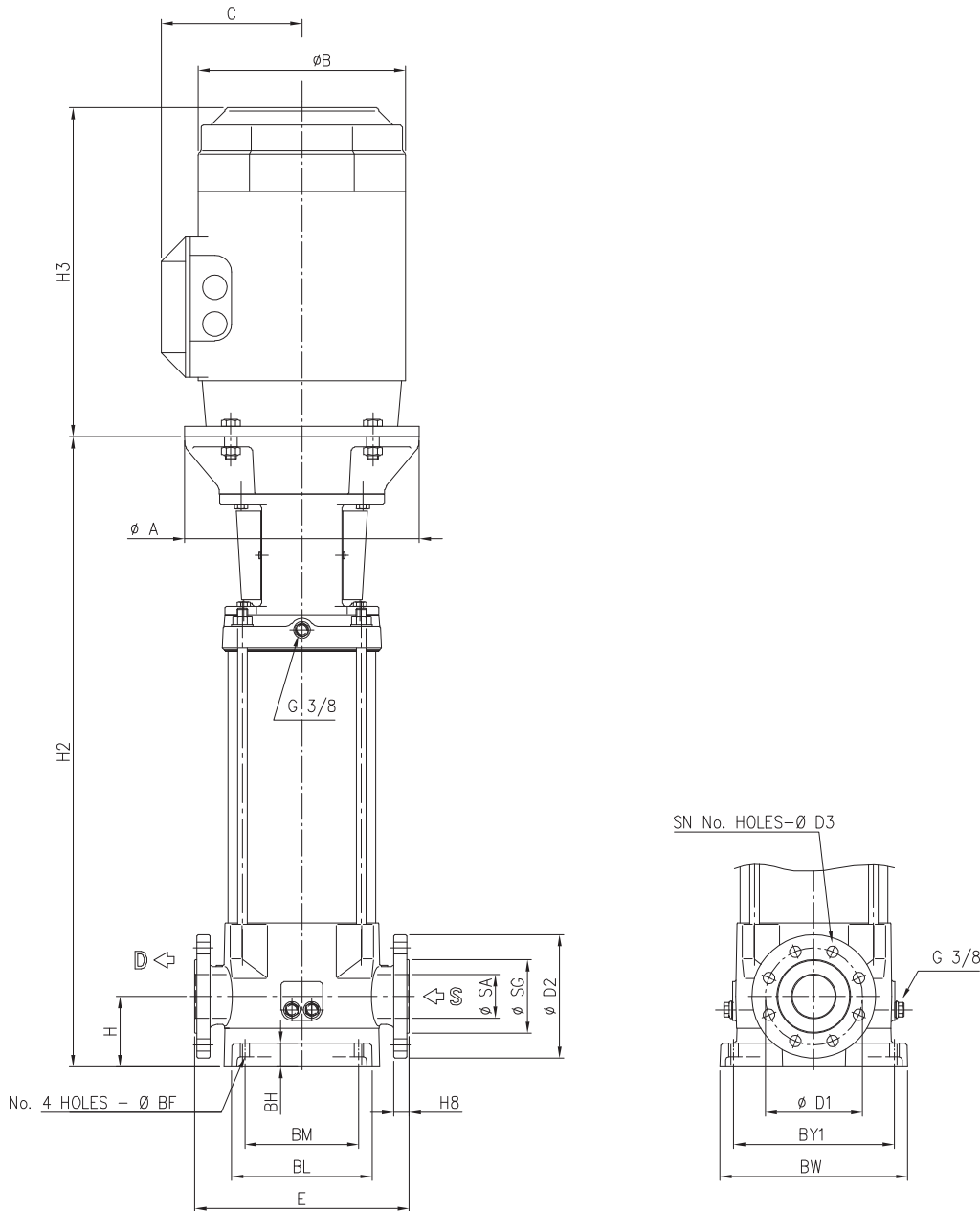
DIMENSIONAL TABLE

Model	Mot. Mec	P. max. [MPa]	H	H2	H3		F	E	B		C		Dimensions [mm]													
					[2]	[1]			[2]	[1]	[2]	[1]	BM	BL	BY1	BW	SA	SG	D1	D2	H8	SN	D3	BF	BH	A
EVM 3 2N5/0.37 (M)	71	1,6	50	241	215	215	160	206	142	142	129	114	100	149	180	210	G1	-	75	-	-	2	M10	Ø12	20	Ø105
EVM 3 3N5/0.37 (M)	71	1,6	50	262	215	215	160	206	142	142	129	114	100	149	180	210	G1	-	75	-	-	2	M10	Ø12	20	Ø105
EVM 3 4N5/0.55 (M)	71	1,6	50	283	215	215	160	206	142	142	129	114	100	149	180	210	G1	-	75	-	-	2	M10	Ø12	20	Ø105
EVM 3 5N5/0.55 (M)	71	1,6	50	304	215	215	160	206	142	142	129	114	100	149	180	210	G1	-	75	-	-	2	M10	Ø12	20	Ø105
EVM 3 6N5/0.75 (M)	80	1,6	50	335	232	232	160	206	160	160	150	139	100	149	180	210	G1	-	75	-	-	2	M10	Ø12	20	Ø120
EVM 3 7N5/0.75 (M)	80	1,6	50	356	232	232	160	206	160	160	150	139	100	149	180	210	G1	-	75	-	-	2	M10	Ø12	20	Ø120
EVM 3 9N5/1.1 (M)	80	1,6	50	398	232	232	160	206	160	160	150	139	100	149	180	210	G1	-	75	-	-	2	M10	Ø12	20	Ø120
EVM 3 11N5/1.1 (M)	80	1,6	50	440	232	232	160	206	160	160	150	139	100	149	180	210	G1	-	75	-	-	2	M10	Ø12	20	Ø120
EVM 3 13N5/1.5 (M)	90S	1,6	50	492	278	267	160	206	172	180	140	148	100	149	180	210	G1	-	75	-	-	2	M10	Ø12	20	Ø140
EVM 3 15N5/1.5 (M)	90S	1,6	50	534	278	267	160	206	172	180	140	148	100	149	180	210	G1	-	75	-	-	2	M10	Ø12	20	Ø140
EVM 3 18F5/2.2 (M)	90L	2,5	75	632	278	267	-	250	172	180	140	148	100	149	180	210	Ø25	Ø63	Ø85	Ø115	16	4	Ø14	Ø12	20	Ø140
EVM 3 22F5/2.2 (M)	90L	2,5	75	716	278	267	-	250	172	180	140	148	100	149	180	210	Ø25	Ø63	Ø85	Ø115	16	4	Ø14	Ø12	20	Ø140
EVM 3 26F5/3.0	100	2,5	75	810	-	306	-	250	-	196	-	155	100	149	180	210	Ø25	Ø63	Ø85	Ø115	16	4	Ø14	Ø12	20	Ø160
EVM 5 2N5/0.37 (M)	71	1,6	50	255	215	215	160	206	142	142	129	114	100	149	180	210	G1¼	-	75	-	-	2	M10	Ø12	20	Ø105
EVM 5 3N5/0.55 (M)	71	1,6	50	283	215	215	160	206	142	142	129	114	100	149	180	210	G1¼	-	75	-	-	2	M10	Ø12	20	Ø105
EVM 5 4N5/0.75 (M)	80	1,6	50	321	232	232	160	206	160	160	150	139	100	149	180	210	G1¼	-	75	-	-	2	M10	Ø12	20	Ø120
EVM 5 5N5/1.1 (M)	80	1,6	50	349	232	232	160	206	160	160	150	139	100	149	180	210	G1¼	-	75	-	-	2	M10	Ø12	20	Ø120
EVM 5 6N5/1.1 (M)	80	1,6	50	377	232	232	160	206	160	160	150	139	100	149	180	210	G1¼	-	75	-	-	2	M10	Ø12	20	Ø120
EVM 5 7N5/1.5 (M)	90S	1,6	50	415	278	267	160	206	172	180	140	148	100	149	180	210	G1¼	-	75	-	-	2	M10	Ø12	20	Ø140
EVM 5 8N5/1.5 (M)	90S	1,6	50	443	278	267	160	206	172	180	140	148	100	149	180	210	G1¼	-	75	-	-	2	M10	Ø12	20	Ø140
EVM 5 10N5/2.2 (M)	90L	1,6	50	509	278	267	160	206	172	180	140	148	100	149	180	210	G1¼	-	75	-	-	2	M10	Ø12	20	Ø140
EVM 5 11N5/2.2 (M)	90L	1,6	50	537	278	267	160	206	172	180	140	148	100	149	180	210	G1¼	-	75	-	-	2	M10	Ø12	20	Ø140
EVM 5 12N5/2.2 (M)	90L	1,6	50	565	278	267	160	206	172	180	140	148	100	149	180	210	G1¼	-	75	-	-	2	M10	Ø12	20	Ø140
EVM 5 14N5/3.0	100	1,6	50	631	-	306	160	206	-	196	-	155	100	149	180	210	G1¼	-	75	-	-	2	M10	Ø12	20	Ø160
EVM 5 16N5/3.0	100	1,6	50	687	-	306	160	206	-	196	-	155	100	149	180	210	G1¼	-	75	-	-	2	M10	Ø12	20	Ø160
EVM 5 18F5/4.0	112	2,5	75	768	-	306	-	250	-	196	-	155	100	149	180	210	Ø32	Ø71	Ø100	Ø140	20	4	Ø14	Ø12	20	Ø160
EVM 5 19F5/4.0	112	2,5	75	796	-	306	-	250	-	196	-	155	100	149	180	210	Ø32	Ø71	Ø100	Ø140	20	4	Ø14	Ø12	20	Ø160
EVM 5 22F5/4.0	112	2,5	75	880	-	306	-	250	-	196	-	155	100	149	180	210	Ø32	Ø71	Ø100	Ø140	20	4	Ø14	Ø12	20	Ø160
EVM 5 24F5/5.5	132	2,5	75	947	-	328	-	250	-	220	-	161	100	149	180	210	Ø32	Ø71	Ø100	Ø140	20	4	Ø14	Ø12	20	Ø300
EVM 10 2N5/0.75 (M)	80	1,6	80	333	232	232	200	252	160	160	150	139	130	190	215	250	G1½	-	100	-	-	2	M12	Ø12	20	Ø120
EVM 10 3N5/1.1 (M)	80	1,6	80	363	232	232	200	252	160	160	150	139	130	190	215	250	G1½	-	100	-	-	2	M12	Ø12	20	Ø120
EVM 10 4N5/1.5 (M)	90S	1,6	80	403	278	267	200	252	172	180	140	148	130	190	215	250	G1½	-	100	-	-	2	M12	Ø12	20	Ø140
EVM 10 5N5/2.2 (M)	90L	1,6	80	443	278	267	200	252	172	180	140	148	130	190	215	250	G1½	-	100	-	-	2	M12	Ø12	20	Ø140
EVM 10 6N5/2.2 (M)	90L	1,6	80	473	278	267	200	252	172	180	140	148	130	190	215	250	G1½	-	100	-	-	2	M12	Ø12	20	Ø140
EVM 10 8N5/3.0	100	1,6	80	543	-	306	200	252	-	196	-	155	130	190	215	250	G1½	-	100	-	-	2	M12	Ø12	20	Ø160
EVM 10 10N5/4.0	112	1,6	80	603	-	306	200	252	-	196	-	155	130	190	215	250	G1½	-	100	-	-	2	M12	Ø12	20	Ø160
EVM 10 11N5/4.0	112	1,6	80	633	-	306	200	252	-	196	-	155	130	190	215	250	G1½	-	100	-	-	2	M12	Ø12	20	Ø160
EVM 10 12N5/5.5	132	1,6	80	674	-	328	200	252	-	220	-	161	130	190	215	250	G1½	-	100	-	-	2	M12	Ø12	20	Ø300
EVM 10 14N5/5.5	132	1,6	80	734	-	328	200	252	-	220	-	161	130	190	215	250	G1½	-	100	-	-	2	M12	Ø12	20	Ø300
EVM 10 15F5/5.5	132	2,5	80	764	-	328	-	280	-	220	-	161	130	190	215	250	Ø40	Ø79	Ø110	Ø150	21	4	Ø18	Ø12	20	Ø300
EVM 10 16F5/7.5	132	2,5	80	794	-	328	-	280	-	220	-	161	130	190	215	250	Ø40	Ø79	Ø110	Ø150	21	4	Ø18	Ø12	20	Ø300
EVM 10 18F5/7.5	132	2,5	80	854	-	328	-	280	-	220	-	161	130	190	215	250	Ø40	Ø79	Ø110	Ø150	21	4	Ø18	Ø12	20	Ø300
EVM 10 20F5/7.5	132	2,5	80	914	-	328	-	280	-	220	-	161	130	190	215	250	Ø40	Ø79	Ø110	Ø150	21	4	Ø18	Ø12	20	Ø300
EVM 10 22F5/11	160M	2,5	80	1004	-	403	-	280	-	248	-	195	130	190	215	250	Ø40	Ø79	Ø110	Ø150	21	4	Ø18	Ø12	20	Ø350
EVM 18 2F5/2.2 (M)	90L	1,6	90	373	278	267	-	300	172	180	140	148	130	190	215	250	Ø50	Ø92	Ø125	Ø165	21	4	Ø18	Ø12	20	Ø140
EVM 18 3F5/3.0	100	1,6	90	423	-	306	-	300	-	196	-	155	130	190	215	250	Ø50	Ø92	Ø125	Ø165	21	4	Ø18	Ø12	20	Ø160
EVM 18 4F5/4.0	112	1,6	90	473	-	306	-	300	-	196	-	155	130	190	215	250	Ø50	Ø92	Ø125	Ø165	21	4	Ø18	Ø12	20	Ø160
EVM 18 5F5/5.5	132	1,6	90	524	-	328	-	300	-	220	-	161	130	190	215	250	Ø50	Ø92	Ø125	Ø165	21	4	Ø18	Ø12	20	Ø300
EVM 18 6F5/5.5	132	1,6	90	564	-	328	-	300	-	220	-	161	130	190	215	250	Ø50	Ø92	Ø125	Ø165	21	4	Ø18	Ø12	20	Ø300
EVM 18 7F5/7.5	132	2,5	90	604	-	328	-	300	-	220	-	161	130	190	215	250	Ø50	Ø92	Ø125	Ø165	21	4	Ø18	Ø12	20	Ø300
EVM 18 8F5/7.5	132	2,5	90	644	-	328	-	300	-	220	-	161	130	190	215	250	Ø50	Ø92	Ø125	Ø165	21	4	Ø18	Ø12	20	Ø300
EVM 18 10F5/11	160M	2,5	90	754	-	403	-	300	-	248	-	195	130	190	215	250	Ø50	Ø92	Ø125	Ø165	21	4	Ø18	Ø12	20	Ø350
EVM 18 12F5/11	160M	2,5	90	834	-	403	-	300	-	248	-	195	130	190	215	250	Ø50	Ø92	Ø125	Ø165	21	4	Ø18	Ø12	20	Ø350
EVM 18 14F5/15	160M	2,5	90	914	-	498	-	300	-	317	-	238	130	190	215	250	Ø50	Ø92	Ø125	Ø165	21	4	Ø18	Ø12	20	Ø350
EVM 18 15F5/15	160M	2,5	90	954	-	498	-	300	-	317	-	238	130	190	215	250	Ø50	Ø92	Ø125	Ø16						

VERTICAL MULTISTAGE ELECTRIC PUMPS

in cast iron, AISI 304, AISI 316

DIMENSIONS EVM 32-45-64



DIMENSIONAL TABLE

Model	Mot. Mec	P. max. [MPa]	Dimensions [mm]																			
			H	H2	H3 [1]	E	B [1]	C [1]	BM	BL	BY1	BW	SA	SG	D1	D2	H8	SN	D3	BF	BH	A
EVM 32 1-0F5/2.2	90L	1,6	105	493	267	320	180	148	170	210	240	280	Ø65	Ø110	Ø145	Ø185	23	4	Ø18	Ø14	35	140
EVM 32 2-2F5/3.0	100	1,6	105	503	306	320	196	155	170	210	240	280	Ø65	Ø110	Ø145	Ø185	23	4	Ø18	Ø14	35	160
EVM 32 2-0F5/4.0	112	1,6	105	503	306	320	196	155	170	210	240	280	Ø65	Ø110	Ø145	Ø185	23	4	Ø18	Ø14	35	160
EVM 32 3-3F5/5.5	132	1,6	105	572	328	320	220	161	170	210	240	280	Ø65	Ø110	Ø145	Ø185	23	4	Ø18	Ø14	35	300
EVM 32 3-1F5/5.5	132	1,6	105	572	328	320	220	161	170	210	240	280	Ø65	Ø110	Ø145	Ø185	23	4	Ø18	Ø14	35	300
EVM 32 4-3F5/7.5	132	1,6	105	620	328	320	220	161	170	210	240	280	Ø65	Ø110	Ø145	Ø185	23	4	Ø18	Ø14	35	300
EVM 32 4-1F5/7.5	132	1,6	105	620	328	320	220	161	170	210	240	280	Ø65	Ø110	Ø145	Ø185	23	4	Ø18	Ø14	35	300
EVM 32 5-3F5/11	160M	1,6	105	799	403	320	248	195	170	210	240	280	Ø65	Ø110	Ø145	Ø185	23	4	Ø18	Ø14	35	350
EVM 32 5-0F5/11	160M	1,6	105	799	403	320	248	195	170	210	240	280	Ø65	Ø110	Ø145	Ø185	23	4	Ø18	Ø14	35	350

VERTICAL MULTISTAGE ELECTRIC PUMPS

in cast iron, AISI 304, AISI 316

DIMENSIONAL TABLE

Model	Mot. Mec	P. max. [MPa]	Dimensions [mm]																			
			H	H2	H3 [1]	E	B [1]	C [1]	BM	BL	BY1	BW	SA	SG	D1	D2	H8	SN	D3	BF	BH	A
EVM 32 6-3F5/11	160M	1,6	105	847	403	320	248	195	170	210	240	280	Ø65	Ø110	Ø145	Ø185	23	4	Ø18	Ø14	35	350
EVM 32 6-2F5/11	160M	1,6	105	847	403	320	248	195	170	210	240	280	Ø65	Ø110	Ø145	Ø185	23	4	Ø18	Ø14	35	350
EVM 32 7-3F5/15	160M	1,6	105	895	498	320	317	238	170	210	240	280	Ø65	Ø110	Ø145	Ø185	23	4	Ø18	Ø14	35	350
EVM 32 7-0F5/15	160M	1,6	105	895	498	320	317	238	170	210	240	280	Ø65	Ø110	Ø145	Ø185	23	4	Ø18	Ø14	35	350
EVM 32 8-3F5/15	160M	2,5	105	943	498	320	317	238	170	210	240	280	Ø65	Ø110	Ø145	Ø185	23	8	Ø18	Ø14	35	350
EVM 32 8-1F5/15	160M	2,5	105	943	498	320	317	238	170	210	240	280	Ø65	Ø110	Ø145	Ø185	23	8	Ø18	Ø14	35	350
EVM 32 9-3F5/18.5	160L	2,5	105	991	542	320	317	238	170	210	240	280	Ø65	Ø110	Ø145	Ø185	23	8	Ø18	Ø14	35	350
EVM 32 9-0F5/18.5	160L	2,5	105	991	542	320	317	238	170	210	240	280	Ø65	Ø110	Ø145	Ø185	23	8	Ø18	Ø14	35	350
EVM 32 10-3F5/18.5	160L	2,5	105	1039	542	320	317	238	170	210	240	280	Ø65	Ø110	Ø145	Ø185	23	8	Ø18	Ø14	35	350
EVM 32 10-2F5/18.5	160L	2,5	105	1039	542	320	317	238	170	210	240	280	Ø65	Ø110	Ø145	Ø185	23	8	Ø18	Ø14	35	350
EVM 32 11-3F5/22	180	2,5	105	1087	577	320	360	268	170	210	240	280	Ø65	Ø110	Ø145	Ø185	23	8	Ø18	Ø14	35	350
EVM 32 11-0F5/22	180	2,5	105	1087	577	320	360	268	170	210	240	280	Ø65	Ø110	Ø145	Ø185	23	8	Ø18	Ø14	35	350
EVM 32 12-3F5/22	180	2,5	105	1135	577	320	360	268	170	210	240	280	Ø65	Ø110	Ø145	Ø185	23	8	Ø18	Ø14	35	350
EVM 32 13-3F5/30	200	3,0	105	1198	658	320	399	300	170	210	240	280	Ø65	Ø110	Ø145	Ø185	23	8	Ø18	Ø14	35	400
EVM 32 13-0F5/30	200	3,0	105	1198	658	320	399	300	170	210	240	280	Ø65	Ø110	Ø145	Ø185	23	8	Ø18	Ø14	35	400
EVM 32 14-3F5/30	200	3,0	105	1246	658	320	399	300	170	210	240	280	Ø65	Ø110	Ø145	Ø185	23	8	Ø18	Ø14	35	400
EVM 32 14-0F5/30	200	3,0	105	1246	658	320	399	300	170	210	240	280	Ø65	Ø110	Ø145	Ø185	23	8	Ø18	Ø14	35	400
EVM 45 1-1F5/3.0	100	1,6	140	525	306	365	196	155	190	251	266	331	Ø80	Ø120	Ø160	Ø200	20	8	Ø18	Ø14	45	160
EVM 45 1-0F5/4.0	112	1,6	140	525	306	365	196	155	190	251	266	331	Ø80	Ø120	Ø160	Ø200	20	8	Ø18	Ø14	45	160
EVM 45 2-2F5/5.5	132	1,6	140	618	328	365	220	161	190	251	266	331	Ø80	Ø120	Ø160	Ø200	20	8	Ø18	Ø14	45	300
EVM 45 2-0F5/7.5	132	1,6	140	618	328	365	220	161	190	251	266	331	Ø80	Ø120	Ø160	Ø200	20	8	Ø18	Ø14	45	300
EVM 45 3-2F5/11	160M	1,6	140	821	403	365	248	195	190	251	266	331	Ø80	Ø120	Ø160	Ø200	20	8	Ø18	Ø14	45	350
EVM 45 3-0F5/11	160M	1,6	140	821	403	365	248	195	190	251	266	331	Ø80	Ø120	Ø160	Ø200	20	8	Ø18	Ø14	45	350
EVM 45 4-2F5/15	160M	2,5	140	893	498	365	317	238	190	251	266	331	Ø80	Ø120	Ø160	Ø200	20	8	Ø18	Ø14	45	350
EVM 45 4-0F5/15	160M	2,5	140	893	498	365	317	238	190	251	266	331	Ø80	Ø120	Ø160	Ø200	20	8	Ø18	Ø14	45	350
EVM 45 5-2F5/18.5	160L	2,5	140	965	542	365	317	238	190	251	266	331	Ø80	Ø120	Ø160	Ø200	20	8	Ø18	Ø14	45	350
EVM 45 5-0F5/18.5	160L	2,5	140	965	542	365	317	238	190	251	266	331	Ø80	Ø120	Ø160	Ø200	20	8	Ø18	Ø14	45	350
EVM 45 6-2F5/22	180	2,5	140	1037	577	365	360	268	190	251	266	331	Ø80	Ø120	Ø160	Ø200	20	8	Ø18	Ø14	45	350
EVM 45 6-0F5/22	180	2,5	140	1037	577	365	360	268	190	251	266	331	Ø80	Ø120	Ø160	Ø200	20	8	Ø18	Ø14	45	350
EVM 45 7-2F5/30	200	2,5	140	1124	658	365	399	300	190	251	266	331	Ø80	Ø120	Ø160	Ø200	20	8	Ø18	Ø14	45	400
EVM 45 7-0F5/30	200	2,5	140	1124	658	365	399	300	190	251	266	331	Ø80	Ø120	Ø160	Ø200	20	8	Ø18	Ø14	45	400
EVM 45 8-2F5/30	200	2,5	140	1196	658	365	399	300	190	251	266	331	Ø80	Ø120	Ø160	Ø200	20	8	Ø18	Ø14	45	400
EVM 45 8-0F5/30	200	2,5	140	1196	658	365	399	300	190	251	266	331	Ø80	Ø120	Ø160	Ø200	20	8	Ø18	Ø14	45	400
EVM 45 9-2F5/30	200	2,5	140	1269	658	365	399	300	190	251	266	331	Ø80	Ø120	Ø160	Ø200	20	8	Ø18	Ø14	45	400
EVM 45 9-0F5/37	200	2,5	140	1269	658	365	399	300	190	251	266	331	Ø80	Ø120	Ø160	Ø200	20	8	Ø18	Ø14	45	400
EVM 45 10-2F5/37	200	3,0	140	1341	658	365	399	300	190	251	266	331	Ø80	Ø120	Ø160	Ø200	20	8	Ø18	Ø14	45	400
EVM 45 10-0F5/37	200	3,0	140	1341	658	365	399	300	190	251	266	331	Ø80	Ø120	Ø160	Ø200	20	8	Ø18	Ø14	45	400
EVM 64 1-1F5/4.0	112	1,6	140	525	306	365	196	155	190	251	266	331	Ø100	Ø140	Ø180	Ø220	20	8	Ø18	Ø14	45	160
EVM 64 1-0F5/5.5	132	1,6	140	546	328	365	220	161	190	251	266	331	Ø100	Ø140	Ø180	Ø220	20	8	Ø18	Ø14	45	300
EVM 64 2-2F5/7.5	132	1,6	140	618	328	365	220	161	190	251	266	331	Ø100	Ø140	Ø180	Ø220	20	8	Ø18	Ø14	45	300
EVM 64 2-1F5/11	160M	1,6	140	749	403	365	248	195	190	251	266	331	Ø100	Ø140	Ø180	Ø220	20	8	Ø18	Ø14	45	350
EVM 64 2-0F5/11	160M	1,6	140	749	403	365	248	195	190	251	266	331	Ø100	Ø140	Ø180	Ø220	20	8	Ø18	Ø14	45	350
EVM 64 3-3F5/15	160M	1,6	140	821	498	365	317	238	190	251	266	331	Ø100	Ø140	Ø180	Ø220	20	8	Ø18	Ø14	45	350
EVM 64 3-2F5/15	160M	1,6	140	821	498	365	317	238	190	251	266	331	Ø100	Ø140	Ø180	Ø220	20	8	Ø18	Ø14	45	350
EVM 64 3-1F5/15	160M	1,6	140	821	498	365	317	238	190	251	266	331	Ø100	Ø140	Ø180	Ø220	20	8	Ø18	Ø14	45	350
EVM 64 3-0F5/18.5	160L	1,6	140	821	542	365	317	238	190	251	266	331	Ø100	Ø140	Ø180	Ø220	20	8	Ø18	Ø14	45	350
EVM 64 4-3F5/18.5	160L	1,6	140	893	542	365	317	238	190	251	266	331	Ø100	Ø140	Ø180	Ø220	20	8	Ø18	Ø14	45	350
EVM 64 4-2F5/18.5	160L	1,6	140	893	542	365	317	238	190	251	266	331	Ø100	Ø140	Ø180	Ø220	20	8	Ø18	Ø14	45	350
EVM 64 4-1F5/22	180	1,6	140	893	577	365	360	268	190	251	266	331	Ø100	Ø140	Ø180	Ø220	20	8	Ø18	Ø14	45	350
EVM 64 4-0F5/22	180	1,6	140	893	577	365	360	268	190	251	266	331	Ø100	Ø140	Ø180	Ø220	20	8	Ø18	Ø14	45	350
EVM 64 5-3F5/30	200	1,6	140	980	658	365	399	300	190	251	266	331	Ø100	Ø140	Ø180	Ø220	20	8	Ø18	Ø14	45	400
EVM 64 5-2F5/30	200	1,6	140	980	658	365	399	300	190	251	266	331	Ø100	Ø140	Ø180	Ø220	20	8	Ø18	Ø14	45	400
EVM 64 5-1F5/30	200	1,6	140	980	658	365	399	300	190	251	266	331	Ø100	Ø140	Ø180	Ø220	20	8	Ø18	Ø14	45	400
EVM 64 5-0F5/30	200	1,6	140	980	658	365	399	300	190	251	266	331	Ø100	Ø140	Ø180	Ø220	20	8	Ø18	Ø14	45	400
EVM 64 6-3F5/30	200	1,6	140	1052	658	365	399	300	190	251	266	331	Ø100	Ø140	Ø180	Ø220	20	8	Ø18	Ø14	45	400
EVM 64 6-2F5/30	200	2,5	140	1052	658	365	399	300	190	251	266	331	Ø100	Ø140	Ø190	Ø235	26	8	Ø22	Ø14	45	400
EVM 64 6-1F5/37	200	2,5	140	1052	658	365	399	300	190	251	266	331	Ø100	Ø140	Ø190	Ø235	26	8	Ø22	Ø14	45	400
EVM 64 6-0F5/37	200	2,5	140	1052	658	365	399	300	190	251	266	331	Ø100	Ø140	Ø190	Ø235	26	8	Ø22	Ø14	45	400
EVM 64 7-3F5/37	200	2,5	140	1124	658	365	399	300	190	251	266	331	Ø100	Ø140	Ø190	Ø235	26	8	Ø22	Ø14	45	400
EVM 64 7-2F5/37	200	2,5	140	1124	658	365	399	300</														

VERTICAL MULTISTAGE ELECTRIC PUMPS

in cast iron, AISI 304, AISI 316

ELECTRIC DATA TABLE EVM 3-5-10-18

Model	P2		Motor Mec	Efficiency		Capacitor		Efficiency (%) and power factor						Absorbed Current [A]			
	[HP]	[kW]		Single phase	Three phase	Single phase µF	V _c	Single phase η % 100%	cos φ 100%	50%	Three phase η % 75%	100%	cos φ 100%	Single phase 230V	230V	Three phase 400V	690V
EVM 3 2N5/0.37 (M)	0,5	0,37	71	-	-	16	400	57,6	0,89	58,0	64,0	70,0	0,78	3,1	1,7	1,0	-
EVM 3 3N5/0.37 (M)	0,5	0,37	71	-	-	16	400	57,6	0,89	58,0	64,0	70,0	0,78	3,1	1,7	1,0	-
EVM 3 4N5/0.55 (M)	0,75	0,55	71	-	-	16	400	69,0	0,89	57,0	64,0	71,0	0,77	3,9	2,6	1,5	-
EVM 3 5N5/0.55 (M)	0,75	0,55	71	-	-	16	400	69,0	0,89	57,0	64,0	71,0	0,77	3,9	2,6	1,5	-
EVM 3 6N5/0.75 (M)	1	0,75	80	-	IE2	25	400	65,0	0,95	77,3	78,5	80,5	0,78	5,3	2,9	1,7	-
EVM 3 7N5/0.75 (M)	1	0,75	80	-	IE2	25	400	65,0	0,95	77,3	78,5	80,5	0,78	5,3	2,9	1,7	-
EVM 3 9N5/1.1 (M)	1,5	1,1	80	-	IE2	36	400	74,0	0,97	79,5	81,2	81,5	0,78	6,5	4,3	2,5	-
EVM 3 11N5/1.1 (M)	1,5	1,1	80	-	IE2	36	400	74,0	0,97	79,5	81,2	81,5	0,78	6,5	4,3	2,5	-
EVM 3 13N5/1.5 (M)	2	1,5	90S	-	IE2	35	400	79,0	0,97	81,0	82,8	82,8	0,80	8,8	5,5	3,2	-
EVM 3 15N5/1.5 (M)	2	1,5	90S	-	IE2	35	400	79,0	0,97	81,0	82,8	82,8	0,80	8,8	5,5	3,2	-
EVM 3 18F5/2.2 (M)	3	2,2	90L	-	IE2	40	400	78,0	0,97	82,5	84,0	84,0	0,85	12,9	7,6	4,4	-
EVM 3 22F5/2.2 (M)	3	2,2	90L	-	IE2	40	400	78,0	0,97	82,5	84,0	84,0	0,85	12,9	7,6	4,4	-
EVM 3 26F5/3.0	4	3	100	-	IE2	-	-	-	-	84,1	85,8	85,5	0,84	-	10,2	5,9	-
EVM 5 2N5/0.37 (M)	0,5	0,37	71	-	-	16	400	57,6	0,89	58,0	64,0	70,0	0,78	3,1	1,7	1,0	-
EVM 5 3N5/0.55 (M)	0,75	0,55	71	-	-	16	400	69,0	0,89	57,0	64,0	71,0	0,77	3,9	2,6	1,5	-
EVM 5 4N5/0.75 (M)	1	0,75	80	-	IE2	25	400	65,0	0,95	77,3	78,5	80,5	0,78	5,3	2,9	1,7	-
EVM 5 5N5/1.1 (M)	1,5	1,1	80	-	IE2	36	400	74,0	0,97	79,5	81,2	81,5	0,78	6,5	4,3	2,5	-
EVM 5 6N5/1.1 (M)	1,5	1,1	80	-	IE2	36	400	74,0	0,97	79,5	81,2	81,5	0,78	6,5	4,3	2,5	-
EVM 5 7N5/1.5 (M)	2	1,5	90S	-	IE2	35	400	79,0	0,97	81,0	82,8	82,8	0,80	8,8	5,5	3,2	-
EVM 5 8N5/1.5 (M)	2	1,5	90S	-	IE2	35	400	79,0	0,97	81,0	82,8	82,8	0,80	8,8	5,5	3,2	-
EVM 5 10N5/2.2 (M)	3	2,2	90L	-	IE2	40	400	78,0	0,97	82,5	84,0	84,0	0,85	12,9	7,6	4,4	-
EVM 5 11N5/2.2 (M)	3	2,2	90L	-	IE2	40	400	78,0	0,97	82,5	84,0	84,0	0,85	12,9	7,6	4,4	-
EVM 5 12N5/2.2 (M)	3	2,2	90L	-	IE2	40	400	78,0	0,97	82,5	84,0	84,0	0,85	12,9	7,6	4,4	-
EVM 5 14N5/3.0	4	3	100	-	IE2	-	-	-	-	84,1	85,8	85,5	0,84	-	10,2	5,9	-
EVM 5 16N5/3.0	4	3	100	-	IE2	-	-	-	-	84,1	85,8	85,5	0,84	-	10,2	5,9	-
EVM 5 18F5/4.0	5,5	4	112	-	IE2	-	-	-	-	85,2	86,4	86,1	0,86	-	13,5	7,8	-
EVM 5 19F5/4.0	5,5	4	112	-	IE2	-	-	-	-	85,2	86,4	86,1	0,86	-	13,5	7,8	-
EVM 5 22F5/4.0	5,5	4	112	-	IE2	-	-	-	-	85,2	86,4	86,1	0,86	-	13,5	7,8	-
EVM 5 24F5/5.5	7,5	5,5	132S	-	IE2	-	-	-	-	85,8	87,4	87,3	0,88	-	-	10,4	6,0
EVM 10 2N5/0.75 (M)	1	0,75	80	-	IE2	25	400	65,0	0,95	77,3	78,5	80,5	0,78	5,3	2,9	1,7	-
EVM 10 3N5/1.1 (M)	1,5	1,1	80	-	IE2	36	400	74,0	0,97	79,5	81,2	81,5	0,78	6,5	4,3	2,5	-
EVM 10 4N5/1.5 (M)	2	1,5	90S	-	IE2	35	400	79,0	0,97	81,0	82,8	82,8	0,80	8,8	5,5	3,2	-
EVM 10 5N5/2.2 (M)	3	2,2	90L	-	IE2	40	400	78,0	0,97	82,5	84,0	84,0	0,85	12,9	7,6	4,4	-
EVM 10 6N5/2.2 (M)	3	2,2	90L	-	IE2	40	400	78,0	0,97	82,5	84,0	84,0	0,85	12,9	7,6	4,4	-
EVM 10 8N5/3.0	4	3	100	-	IE2	-	-	-	-	84,1	85,8	85,5	0,84	-	10,2	5,9	-
EVM 10 10N5/4.0	5,5	4	112	-	IE2	-	-	-	-	85,2	86,4	86,1	0,86	-	13,5	7,8	-
EVM 10 11N5/4.0	5,5	4	112	-	IE2	-	-	-	-	85,2	86,4	86,1	0,86	-	13,5	7,8	-
EVM 10 12N5/5.5	7,5	5,5	132S	-	IE2	-	-	-	-	85,8	87,4	87,3	0,88	-	-	10,4	6,0
EVM 10 14N5/5.5	7,5	5,5	132S	-	IE2	-	-	-	-	85,8	87,4	87,3	0,88	-	-	10,4	6,0
EVM 10 15F5/5.5	7,5	5,5	132S	-	IE2	-	-	-	-	85,8	87,4	87,3	0,88	-	-	10,4	6,0
EVM 10 16F5/7.5	10	7,5	132S	-	IE2	-	-	-	-	86,5	88,3	88,3	0,87	-	-	14,2	8,2
EVM 10 18F5/7.5	10	7,5	132S	-	IE2	-	-	-	-	86,5	88,3	88,3	0,87	-	-	14,2	8,2
EVM 10 20F5/7.5	10	7,5	132S	-	IE2	-	-	-	-	86,5	88,3	88,3	0,87	-	-	14,2	8,2
EVM 10 22F5/11	15	11	160M	-	IE2	-	-	-	-	88,1	90,0	89,7	0,90	-	-	19,8	11,4
EVM 18 2F5/2.2 (M)	3	2,2	90L	-	IE2	40	400	78,0	0,97	82,5	84,0	84,0	0,85	12,9	7,6	4,4	-
EVM 18 3F5/3.0	4	3	100	-	IE2	-	-	-	-	84,1	85,8	85,5	0,84	-	10,2	5,9	-
EVM 18 4F5/4.0	5,5	4	112	-	IE2	-	-	-	-	85,2	86,4	86,1	0,86	-	13,5	7,8	-
EVM 18 5F5/5.5	7,5	5,5	132S	-	IE2	-	-	-	-	85,8	87,4	87,3	0,88	-	-	10,4	6,0
EVM 18 6F5/5.5	7,5	5,5	132S	-	IE2	-	-	-	-	85,8	87,4	87,3	0,88	-	-	10,4	6,0
EVM 18 7F5/7.5	10	7,5	132S	-	IE2	-	-	-	-	86,5	88,3	88,3	0,87	-	-	14,2	8,2
EVM 18 8F5/7.5	10	7,5	132S	-	IE2	-	-	-	-	86,5	88,3	88,3	0,87	-	-	14,2	8,2
EVM 18 10F5/11	15	11	160M	-	IE2	-	-	-	-	88,1	90,0	89,7	0,90	-	-	19,8	11,4
EVM 18 12F5/11	15	11	160M	-	IE2	-	-	-	-	88,1	90,0	89,7	0,90	-	-	19,8	11,4
EVM 18 14F5/15	20	15	160M	-	IE2	-	-	-	-	90,0	91,0	90,8	0,88	-	-	27,2	15,7
EVM 18 15F5/15	20	15	160M	-	IE2	-	-	-	-	90,0	91,0	90,8	0,88	-	-	27,2	15,7
EVM 18 16F5/15	20	15	160M	-	IE2	-	-	-	-	90,0	91,0	90,8	0,88	-	-	27,2	15,7